

FOR THE FUTURE WITH PASSION & CREATIVITY & CHALLENGE

SUN KOREA

VISION

*FOR THE FUTURE WITH
PASSION & CREATIVITY & CHALLENGE!*



SUN KOREA with DREAM & FUTURE

**FOR THE FUTURE WITH PASSION & CREATIVITY
& CHALLENGE, SUN KOREA CO.,LTD.**



CONTENTS

GREETING · 4

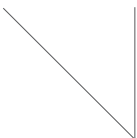
ORGANIZATION · 5

HISTORY · 6

OUR PROMISE TO OUR CUSTOMERS · 8

MARKET AREA · 10

PRODUCT INTRODUCTION · 11



We comply with basic principle for business management and maintain a clean organization culture. Better working environment and welfare for employees can give more opportunities for self-development. We always care for the bigger performance-based on good compensation. Our employee has strong pride and good performance bring highest level of quality, continuous operational innovation and global competitiveness.

We always believe,

“Promise and practice is our pride.”

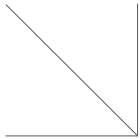
“Practical achievement is our life.”

“Innovative people are the most important asset.”

Don't forget “Customer's satisfaction is our heart.”

World, Stage of unlimited possibilities

We heartily welcome your attention to
“SUN KOREA CO., LTD.” catalogue and very honored to
have an opportunity of introducing our company.



We, “SUN KOREA CO., LTD.” have focused on items of shipbuilding parts, on/offshore oil & gas, chemical & petrochemical area accumulating wealth of experience & excellent reputation because of strong competitiveness such as high quality, reasonable price and on time delivery.

On the strength of our challenge and our willingness to achieve a satisfaction of our customer, will make our best efforts to place its highest priority on our customer’s satisfaction and grow further to ensure prosperity for all our business partner.

We will continue to take on new challenge and find new ways to improve our products and services. As we can instruct technical advice and control the quality for our customer’s demand with professional dealing experience in these items, we believe can find many ways to cooperate with you for our mutual benefit.

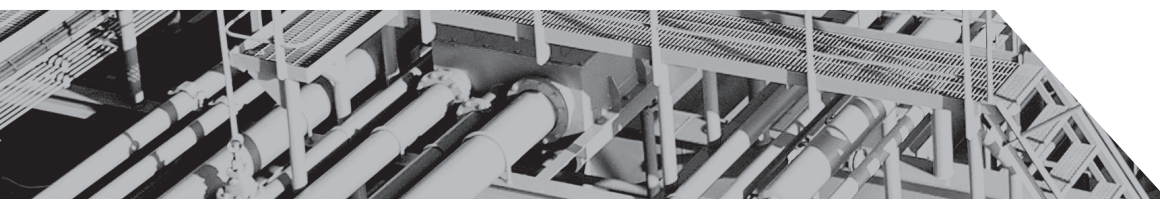
We also continue our best attention to satisfy customer’s demand with full of service and strongly want to develop long term business relationship on the basis of credit.

We look forward to your continued encouragement and support.
Always very appreciated for your kindly attention & cooperation !

Thanks & best regards

President

S.S LEE (James Lee) *James. Lee*



SUN KOREA CO., LTD

#498-65, DAEJEO 1 DONG, GANGSEO-GU, BUSAN, KOREA

SUN PRECISION CO., LTD

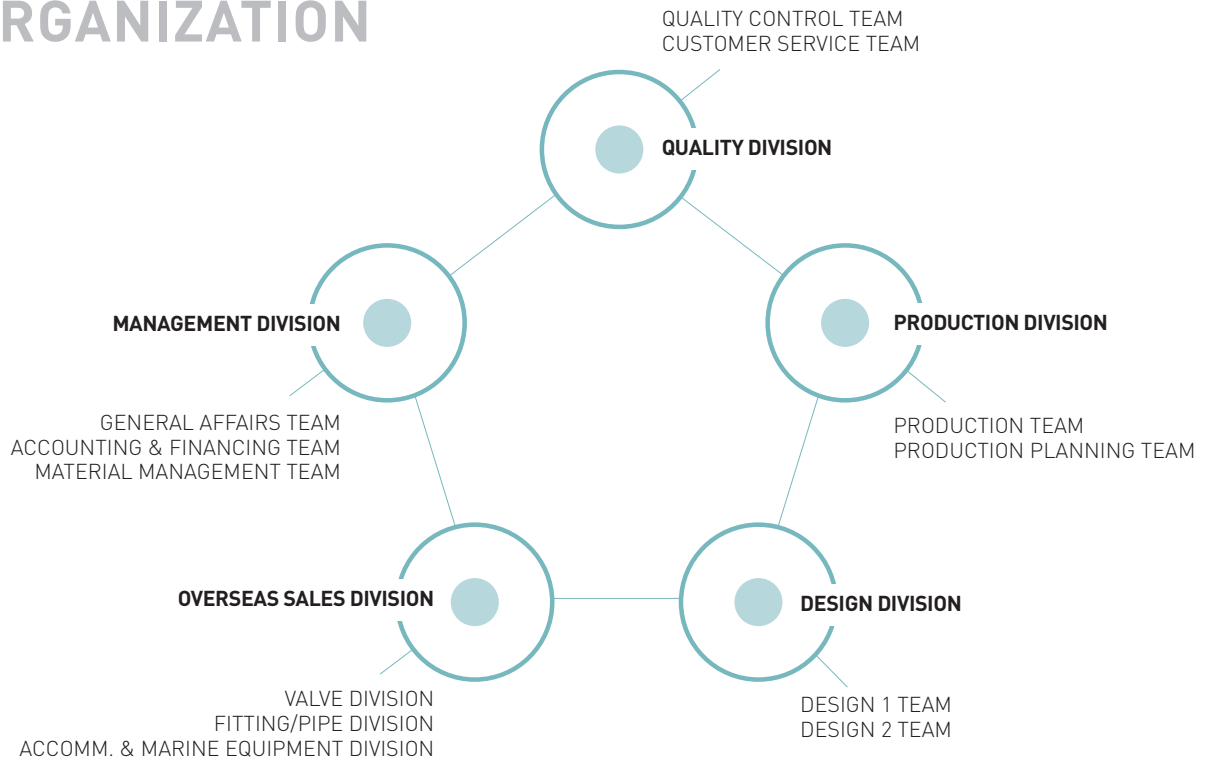
#498-67, DAEJEO 1 DONG, GANGSEO-GU, BUSAN, KOREA

SUN DESIGN CO., LTD

#492-2, DAEWOO EDEN PLAZA, HADAN-2 DONG, SAHA-GU, BUSAN, KOREA



ORGANIZATION



COMPANY HISTORY



- 2002 -
 - FEB.2002** THE COMPANY WAS ESTABLISHED UNDER THE NAME OF "SUN VALVE CO.,LTD"
 - MAR.2002** JOINED A MEMBERSHIP OF SHIPBUILDING EQUIPMENT BUSINESS.
 - MAY.2002** REGISTERED AT THE MINISTRY OF TRADE AND INDUSTRY AND ENERGY AS MANUFACTURER & TRADING COMPANY.
 - NOV.2002** GRANTED AS A MAKER BY KOREA SAFETY CORPORATION.

- 2003 -
 - APR.2003** FOUNDED QUALITY CONTROL DIVISION COMMITTEE
 - JUL.2003** CERTIFIED AS A MEMBER OF KOREA INTERNATIONAL TRADE ASSOCIATION.
 - SEP.2003** REGISTERED AS A BUSINESS PARTNER TO MUHIBBAH MARINE ENGINEERING SDN BHD.(MALAYSIA)

- 2004 -
 - JAN.2004** JOINED A MEMBERSHIP OF KOREA MACHINERY INDUSTRY ASSOCIATION.
 - AUG.2004** REGISTERED AS A BUSINESS PARTNER TO SEMBAWANG SHIPYARD PTE LTD (SSPL), (SINGAPORE)
 - SEP.2004** REGISTERED AS A BUSINESS PARTNER TO JURONG SHIPYARD PTE LTD. (SINGAPORE)

- 2005 -
 - FEB.2005** APPROVED AS OF SUPPLIER FOR WATER & FIRE POWER PLANT EQUIPMENT FROM KHI. (R.O.KOREA)
 - MAR.2005** REGISTERED AS A BUSINESS PARTNER TO UNITHAI SHIPYARD & ENGINEERING LTD. (THAILAND)
 - APR.2005** RENAMED THE COMPANY NAME INTO "SUN INTERNATIONAL CO.,LTD"
 - MAY.2005** REGISTERED AS A BUSINESS PARTNER TO DUBAI DRYDOCKS WORLD. (UAE)
 - AUG.2005** CERTIFIED THE CLEAN COMPANY BY THE MINISTER OF LABOR.
 - NOV.2005** REGISTERED AS A BUSINESS PARTNER TO ZAMIL OPERATION & MAINTENANCE CO.,LTD (FOR SHIPBUILDING) (SAUDI ARABIA)
 - DEC.2005** CONFORMATION CERTIFICATE OF VENTURE COMPANY.

- 2006 -
 - JAN.2006** REGISTERED AS A BUSINESS PARTNER TO PT PAL INDONESIA (INDONESIA)
 - MAR.2006** REGISTERED AS A BUSINESS PARTNER TO BOUSTEAD PENANG SHIPYARD SDN BHD. (MALAYSIA)
 - MAY.2006** REGISTERED AS A BUSINESS PARTNER TO COLOMBO DOCKYARD LTD. (SRI LANKA)
 - MAY.2006** REGISTERED AS A BUSINESS PARTNER TO KEPPEL SINGMARINE PTE LTD. (SINGAPORE)
 - AUG.2006** SELECTED AS A LEADING EXPORTER BY OFFICE OF KOREA INDUSTRIAL PROMOTION.
 - DEC.2006** INTRODUCED ERP (ENTERPRISE RESOURCE PLANNING) SYSTEM.

- 2007 -
 - FEB.2007** REGISTERED AS A BUSINESS PARTNER TO BHARATI SHIPYARD LTD. (INDIA)
 - MAY.2007** REGISTERED AS A BUSINESS PARTNER TO SAIGON SHIPYARD IND. (VIETNAM)
 - JULY.2007** REGISTERED AS A BUSINESS PARTNER TO COCHIN SHIPYARD LTD. (INDIA)
 - AUG.2007** REGISTERED AS A BUSINESS PARTNER TO PT DOK & PERKAPALAN KODJA BAHARI (PERSERO) (INDONESIA)
 - OCT.2007** REGISTERED AS A BUSINESS PARTNER TO SPF (STAINLESS PIPE & FITTINGS). (AUSTRALIA)
 - NOV.2007** REGISTERED AS A BUSINESS PARTNER TO TUONG AIK SHIPYARD SDN BHD. (MALAYSIA)
 - NOV.2007** MOVED AND EXPANDED OUR HEADQUARTER : 492-2, DAEWOO EDEN PLAZA, SAHA-GU, BUSAN, KOREA
 - DEC.2007** MADE BUSINESS RELATIONSHIP TO ABG SHIPYARD LTD. (INDIA)

2008

- JAN.2008** OPENED WAREHOUSE AT DAEJEO 1 DONG, GANGSEOGU, PUSAN, KOREA
REGISTERED AS A BUSINESS PARTNER TO ASIAN MARINE SERVICES PUBLIC COMPANY LIMITED. (THAILAND)
- MAR.2008** REGISTERED AS A BUSINESS PARTNER TO KLINGER DANMARK (DANMARK)
- APR.2008** REGISTERED AS A BUSINESS PARTNER TO CHOWGULE AND COMPANY PVT.LTD. (INDIA)
REGISTERED AS A BUSINESS PARTNER TO TO PT. BATAMEC (INDONESIA)
- MAY.2008** REGISTERED AS A BUSINESS PARTNER TO ITALTHAI MARINE LTD. (THAILAND)
- AUG.2008** REGISTERED AS A BUSINESS PARTNER TO NGV TECH SDN BHD.
REGISTERED CORPORATION COMPANY AS "SUN KOREA CO.,LTD"
- SEP.2008** OPENED 2ND WAREHOUSE IN 3686-7, DAEJEO 1 DONG, GANGSEOGU, PUSAN, KOREA
- NOV.2008** MADE NEW FACTORY AT NOKSAN INDUSTRIAL COMPLEX IN BUSAN.

2009

- APR.2009** REGISTERED AS A BUSINESS PARTNER TO ITS (STI INDUSTRIAL TECHNICAL SUPPLIES BV) (NETHERLANDS)
- AUG.2009** START BUSINESS COOPERATION FOR OVERSEAS MARKETING WITH "EUN KWANG INOTECH CO.,LTD"
- MAY.2009** REGISTERED AS A BUSINESS PARTNER TO MARINE TRADE (CROATIA)
- JULY.2009** OBTAINED THE CLEAN FACTORY FROM THE BUSAN REGIONAL MINISTRY OF KOREA.
- SEP.2009** REGISTERED AS A BUSINESS PARTNER TO PPL SHIPYARD PTE LTD (SINGAPORE)
- OCT.2009** REGISTERED AS A BUSINESS PARTNER TO DUBAI SHIPBUILDING & ENGINEERING L.L.C. (U.A.E.)
- DEC.2009** SELECTED AS A PROMISING MEDIUM ENTERPRISE BY INDUSTRIAL BANK OF KOREA.

2010

- APR.2010** REGISTERED AS A BUSINESS PARTNER TO EMAS OFFSHORE CONSTRUCTION & PRODUCTION (SINGAPORE)
- JUN.2010** REGISTERED AS A BUSINESS PARTNER TO TEBMA SHIPYARDS LTD (INDIA)
- AUG.2010** REGISTERED AS A BUSINESS PARTNER TO SHIN YANG SHIPYARD SDN.BHD. (MALAYSIA)
REGISTERED AS A BUSINESS PARTNER TO PIASAU SLIPWAYS SDN.BHD. (MALAYSIA)

2011

- FEB.2011** REGISTERED AS A BUSINESS PARTNER TO TRIYARDS SSY (VIETNAM)
REGISTERED AS A BUSINESS PARTNER TO TRIYARDS SOFEL (VIETNAM)
- OCT.2011** REGISTERED AS A BUSINESS PARTNER TO DUNG QUAT SHIPBUILDING INDUSTRY COMPANY LTD. (VIETNAM)
- DEC.2011** SELECTED AS A SUPERIORITY COMPANY BY KOREAN GOVERNMENT.

2012

- FEB.2012** REGISTERED AS A BUSINESS PARTNER TO TIMBLO DRYDOCKS PVT LTD. (INDIA)
- JUN.2012** REGISTERED AS A BUSINESS PARTNER TO DONG BAC SHIPYARD. (VIETNAM)
- DEC.2012** SELECTED AS A LEADING COMPANY IN TOTAL EXPORT VALUE BY KOREAN GOVERNMENT.

2013

- MAY.2013** REGISTERED AS A BUSINESS PARTNER TO SBM OFFSHORE (NETHERLAND)
- JUN.2013** REGISTERED AS A BUSINESS PARTNER TO KEPPEL FELS LIMITED. (SINGAPORE)
- OCT.2013** REGISTERED AS A BUSINESS PARTNER TO PETROVIETNAM MARINE SHIPYARD COMPANY. (VIETNAM)

2014

- MAY.2014** ESTABLISHED RESEARCH & DEVELOPMENT CENTER CERTIFIED.
(KOREA INDUSTRIAL TECHNOLOGY ASSOCIATION.)
- SEP.2014** MADE OUR AFFILIATE COMPANY "SUN PRECISION CO.,LTD"
#498-67, DAEJEO 1 DONG, GANGSEO-GU, BUSAN, KOREA
- NOV.2014** OPENED OUR NEW WAREHOUSE
#498-66, DAEJEO 1 DONG, GANGSEO-GU, BUSAN, KOREA
- DEC.2014** SELECTED AS A PROMISING MEDIUM ENTERPRISE BY WOORI BANK IN KOREA.

2015

- JAN.2015** MOVED AND EXPANDED OUR HEADOFFICE AND FACTORY.
#498-65, DAEJEO 1 DONG, GANGSEO-GU, BUSAN, KOREA

OUR PROMISE TO OUR CUSTOMERS

Based on respect for partnership with our relevant maker, **Sun Korea Co.,Ltd** will establish a creative and cooperative organizational culture and enhance the company's competitiveness.



WE ALWAYS WITH YOU!

Our philosophy is to always provide sincere and honest service to our customers. With our customer-oriented management, we hope to achieve greater customer satisfaction.

CUSTOMER ORIENTED VALUE

DEVELOP PRODUCTS AND SERVICES FOR CUSTOMER ORIENTED SATISFACTION



- TOP QUALITY PRODUCT
- CUSTOMER ORIENTED PRICES
- HIGH QUALITY SERVICES

BUILD SPEEDY

BASED ON THE SPEEDY MANAGEMENT, ENHANCE OUR COMPANY'S COMPETITIVENESS



- TIMELY
- EFFICIENCY
- RESPONSIBILITY

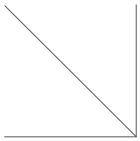
HUMAN RESOURCE MANAGEMENT

PROVIDE A FLEXIBLE AND CREATIVE COOPERATION CULTURE WITH OUR MANY RELEVANT MAKERS.



- FLEXIBLE
- CREATIVE
- COOPERATIVE

World, Stage of unlimited possibilities.



ON/OFFSHORE OIL & GAS

SUN KOREA CO., Ltd takes a major role providing proper valves & fittings on satisfying the technical specification and quality standards of oil & gas production.



CHEMICAL & PETROCHEMICAL AREA

SUN KOREA CO., Ltd takes a major role providing proper valves & fittings on satisfying the technical specification and quality standards of chemical & petrochemical.



SHIPBUILDING AREA

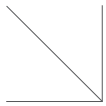
SUN KOREA CO., Ltd takes a major role providing proper valves & fittings on satisfying the technical specification and quality standards of shipbuilding.

Taking first priority for customer's satisfaction based on pursuing top quality, reasonable price, on time delivery with full of service.

Our dedication to progress is driven our enthusiasm.

- Quality of our products and services is a direct reflection of our continuous efforts and hard work.
- We will continue to take on new challenges and find new ways to improve our products and services.

SUN'S OVERSEAS MARKET AREA



AUSTRALIA / CHINA / DENMARK / EGYPT /
ENGLAND / GREECE / INDIA / INDONESIA / IRAN /
ITALY / JAPAN / MALAYSIA / PAKISTAN / PHILIPPINES /
ROMANIA / SAUDI ARABIA / SINGAPORE / SPAIN /
SRI LANKA / SWITZERLAND / THAILAND / TURKEY /
UAE / U.S.A / VIETNAM





PRODUCT INTRODUCTION



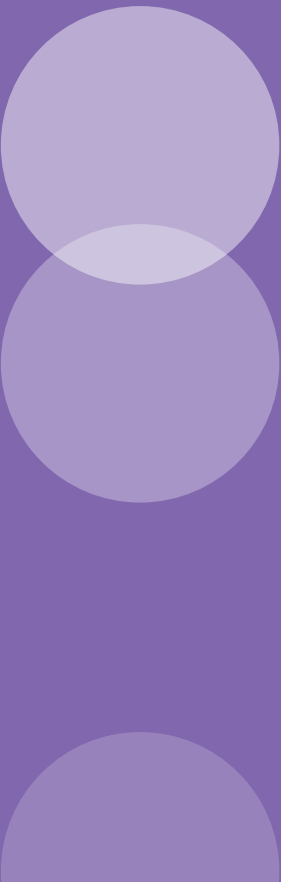
C O N T E N T S



AIR VENT HEAD • 12

SOUNDING SYSTEM • 52

EXPANSION JOINT • 60



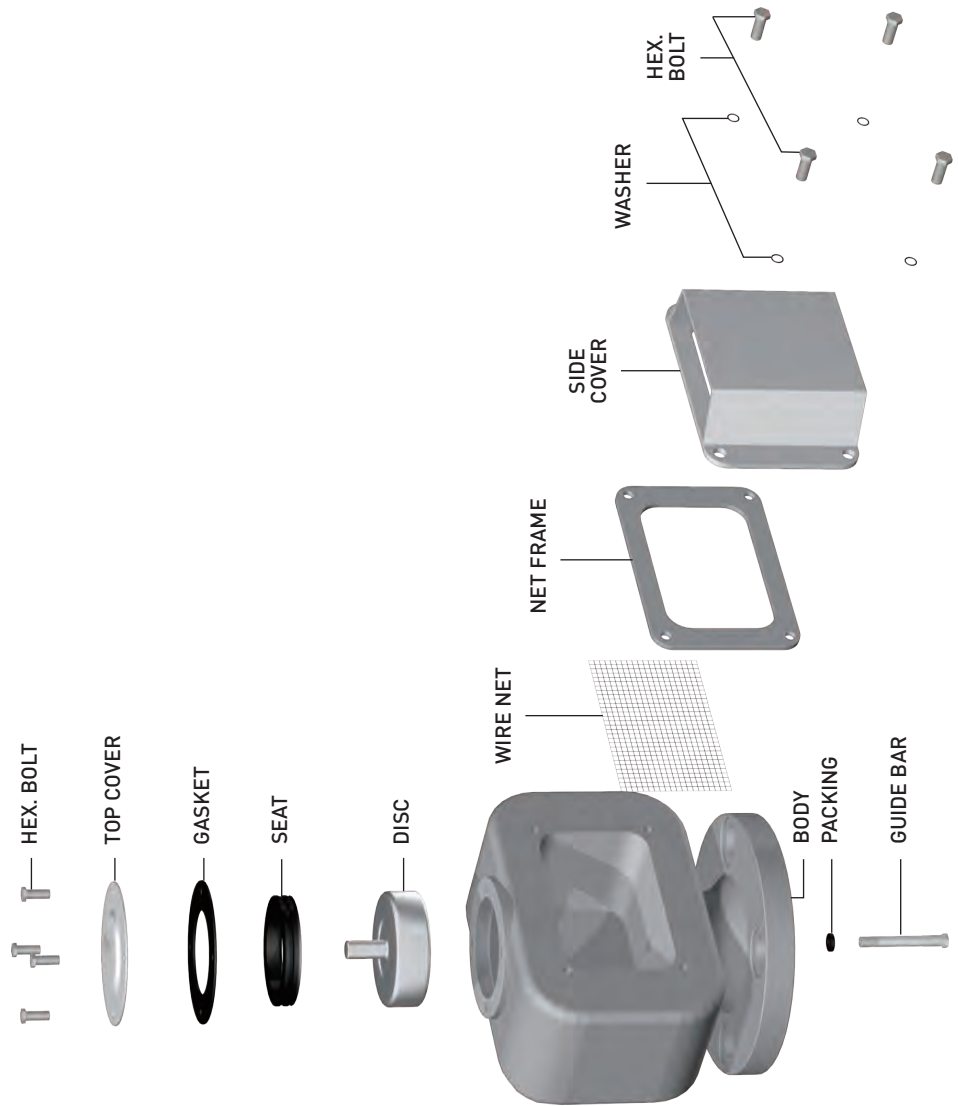
AIR VENT HEAD + CASTING TYPE DISC FLOAT 50A~80A

- PART LIST OF CASTING TYPE DISC FLOAT 50A~80A
- DIMENSION LIST FOR CASTING TYPE DISC FLOAT 50A~80A



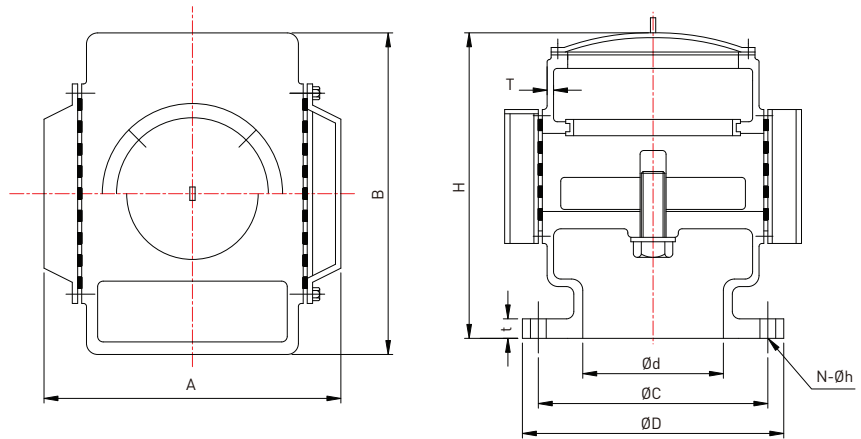
PART LIST OF CASTING TYPE DISC FLOAT 50A~80A

CASTING TYPE
DISC FLOAT 50A~80A



DIMENSION LIST

CASTING TYPE DISC FLOAT 50A~80A



DIMENSION

UNIT(mm)

Nominal dia.		Ød	A	B	H	T	FLANGE (JIS 5K)			
mm	inch						ØD	ØC	t	N-Øh
50A	2"	50	155	120	185	7	130	105	14	4-15
65A	2 ½"	65	180	135	210	7	155	130	14	4-15
80A	3"	80	200	155	230	8	180	145	14	4-19

NOTE

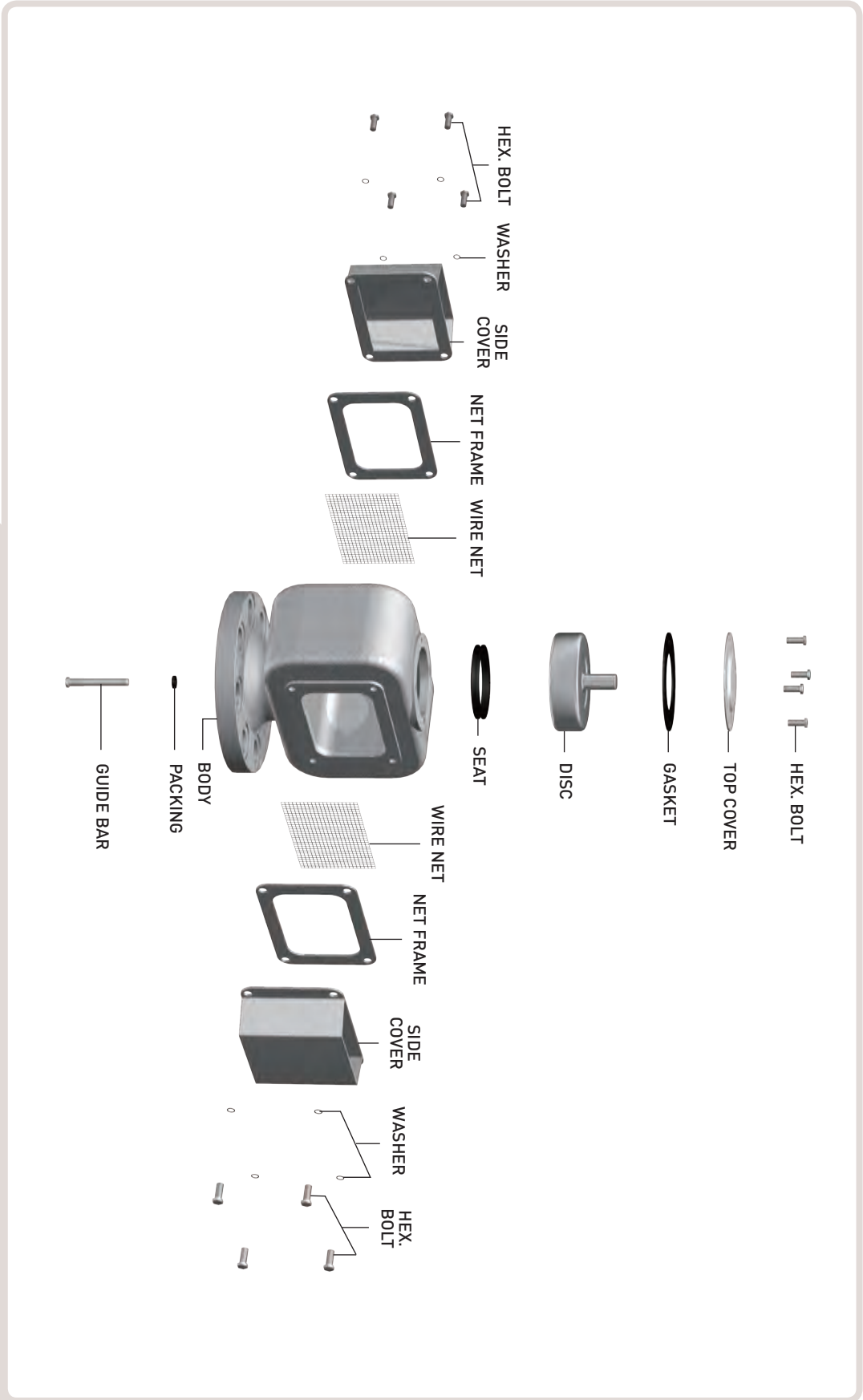
1. Flame screen with wire mesh #30 to be fitted for oil & F.W tank and W.B.T of oil & chemical carrier or wire mesh #4 for other tanks.
2. For oil & F.W system to be fitted with screen cover which upper part is closed.
3. Flange size can be changed to JIS 10K, PN10 & 150LBS as customer's requirement.

AIR VENT HEAD CASTING TYPE DISC FLOAT 100A ~ 350A

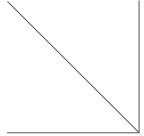
- PART LIST OF CASTING TYPE DISC FLOAT 100A ~ 350A
- DIMENSION LIST FOR CASTING TYPE DISC FLOAT 100A ~ 350A



PART LIST OF CASTING TYPE DISC FLOAT 100A ~ 350A



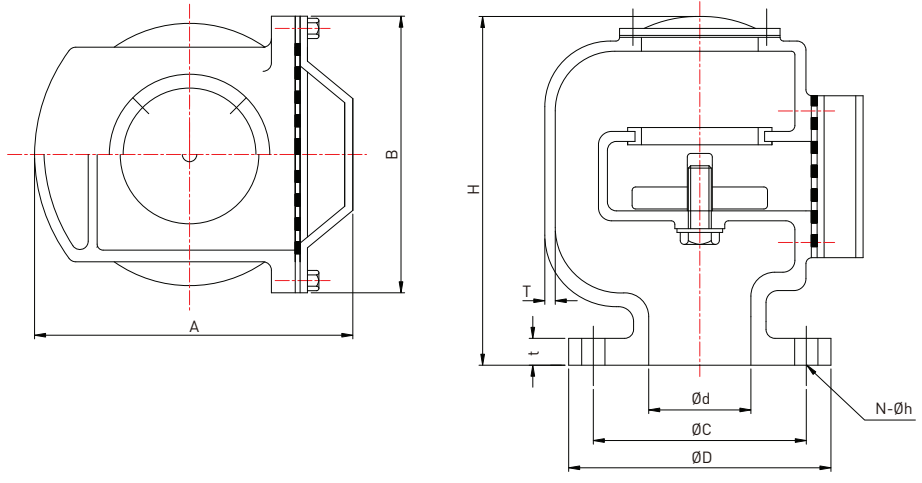
CASTING TYPE
DISC FLOAT 100A ~ 350A



DIMENSION LIST

CASTING TYPE DISC FLOAT 100A ~ 350A

AIR VENT HEAD



DIMENSION

UNIT(mm)

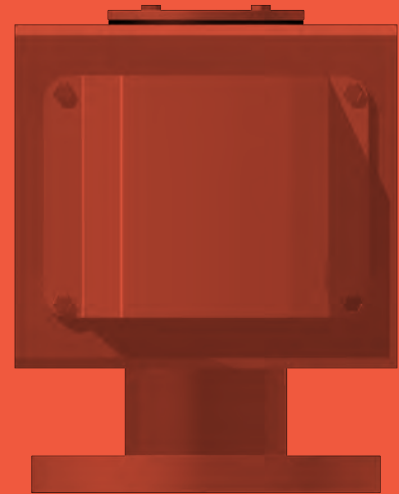
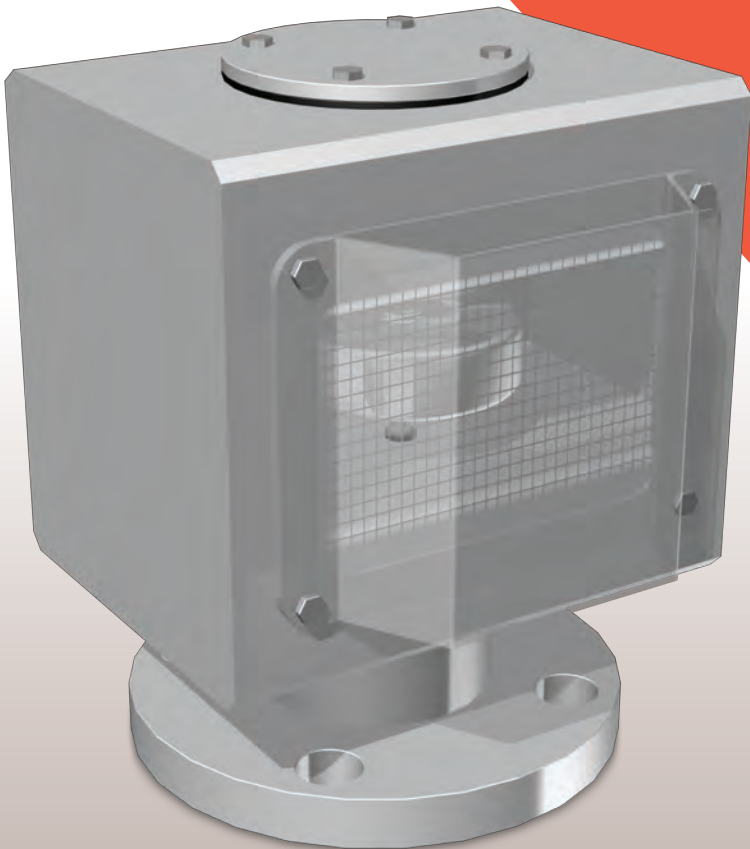
Nominal dia.		Ød	A	B	H	T	FLANGE (JIS 5K)			
mm	inch						ØD	ØC	t	N-Øh
100A	4"	100	225	245	235	8	200	165	16	8-19
125A	5"	125	265	285	265	8	235	200	16	8-19
150A	6"	150	305	330	305	9	265	230	18	8-19
200A	8"	200	370	415	375	9	320	280	20	8-23
250A	10"	250	445	475	405	9	385	345	22	12-23
300A	12"	300	585	620	540	10	430	390	22	12-23
350A	14"	350	680	720	620	12	480	435	24	12-25

NOTE

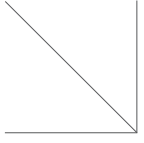
1. Flame screen with wire mesh #30 to be fitted for oil & F.W tank and W.B.T of oil & chemical carrier or wire mesh #4 for other tanks.
2. For oil & F.W system to be fitted with screen cover which upper part is closed.
3. Lifting lug to be for 150A and above size.
4. Flange size can be changed to JIS 10K, PN10 & 150LBS as customer's requirement.

AIR VENT HEAD BOX TYPE DISC FLOAT 40A ~ 80A

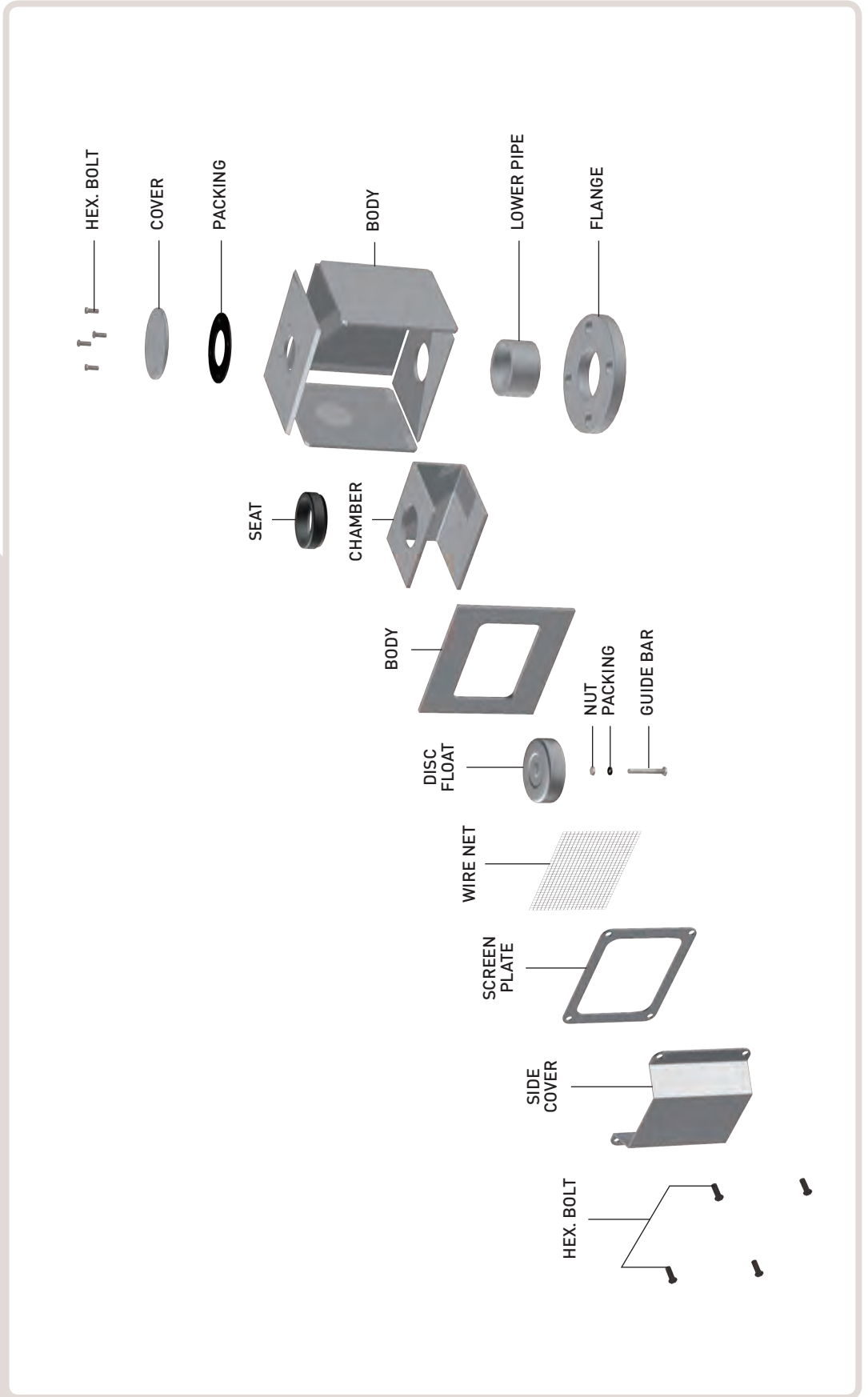
- PART LIST OF BOX TYPE DISC FLOAT 40A ~ 80A
- DIMENSION & WEIGHT LIST FOR BOX TYPE DISC FLOAT 40A ~ 80A



PART LIST OF BOX TYPE DISC FLOAT 40A ~ 80A

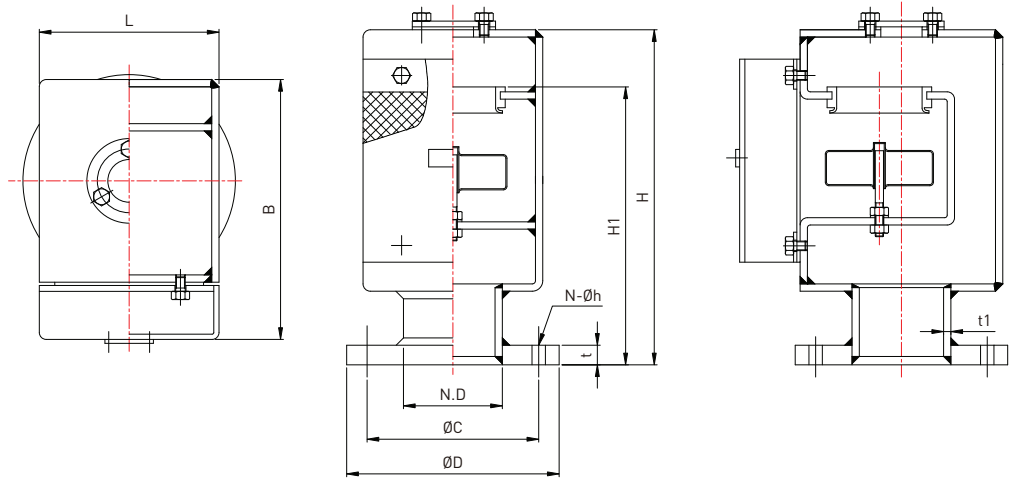


BOX TYPE DISC FLOAT 40A ~ 80A



DIMENSION & WEIGHT LIST

BOX TYPE DISC FLOAT 40A ~ 80A



DIMENSION

UNIT(mm)

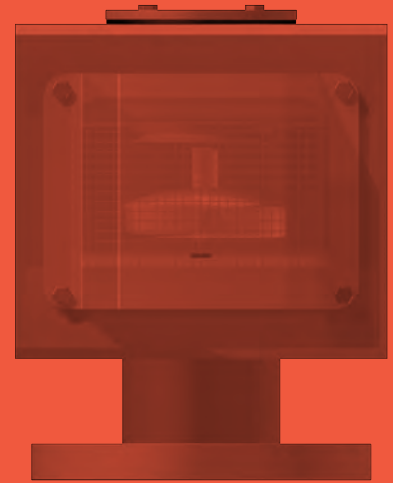
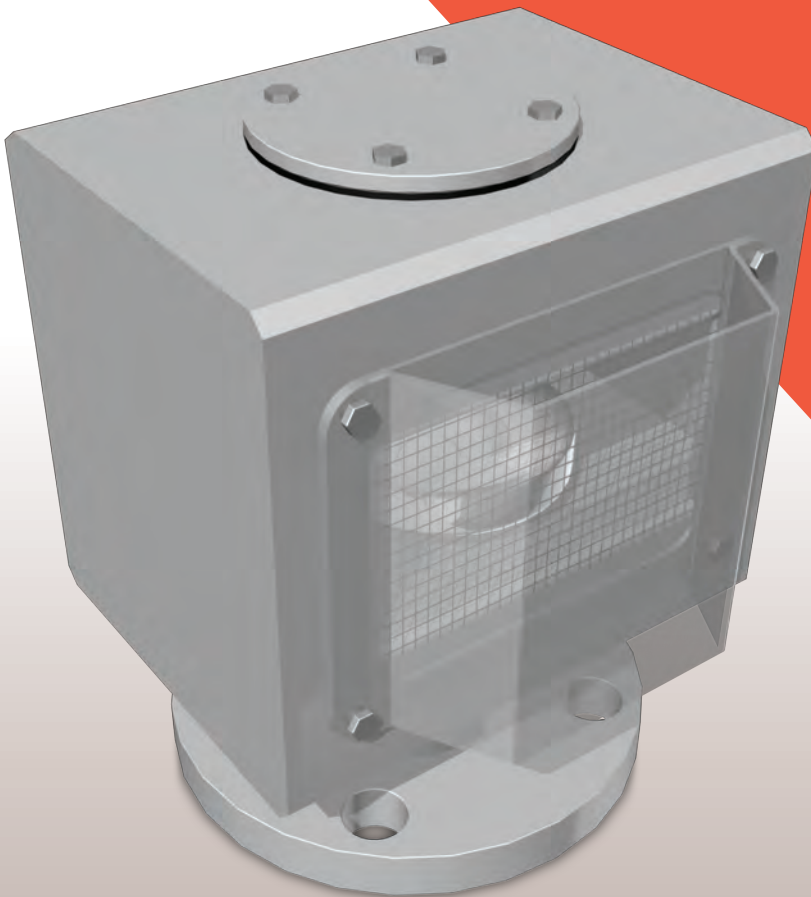
Nominal dia. (N.D)		H	H1	B	L	t1	FLANGE (JIS 5K)				Weight (kg)
mm	inch						ØD	ØC	t	N-Øh	
40A	1 ½"	234	188	153	90	7.1	120	95	12	4-15	7.7
50A	2"	234	188	153	90	8.7	130	105	14	4-15	8.2
65A	2 ½"	245	197	183	107	7.0	155	130	14	4-15	9.6
80A	3"	250	201	216	129	7.6	180	145	14	4-19	11.6

NOTE

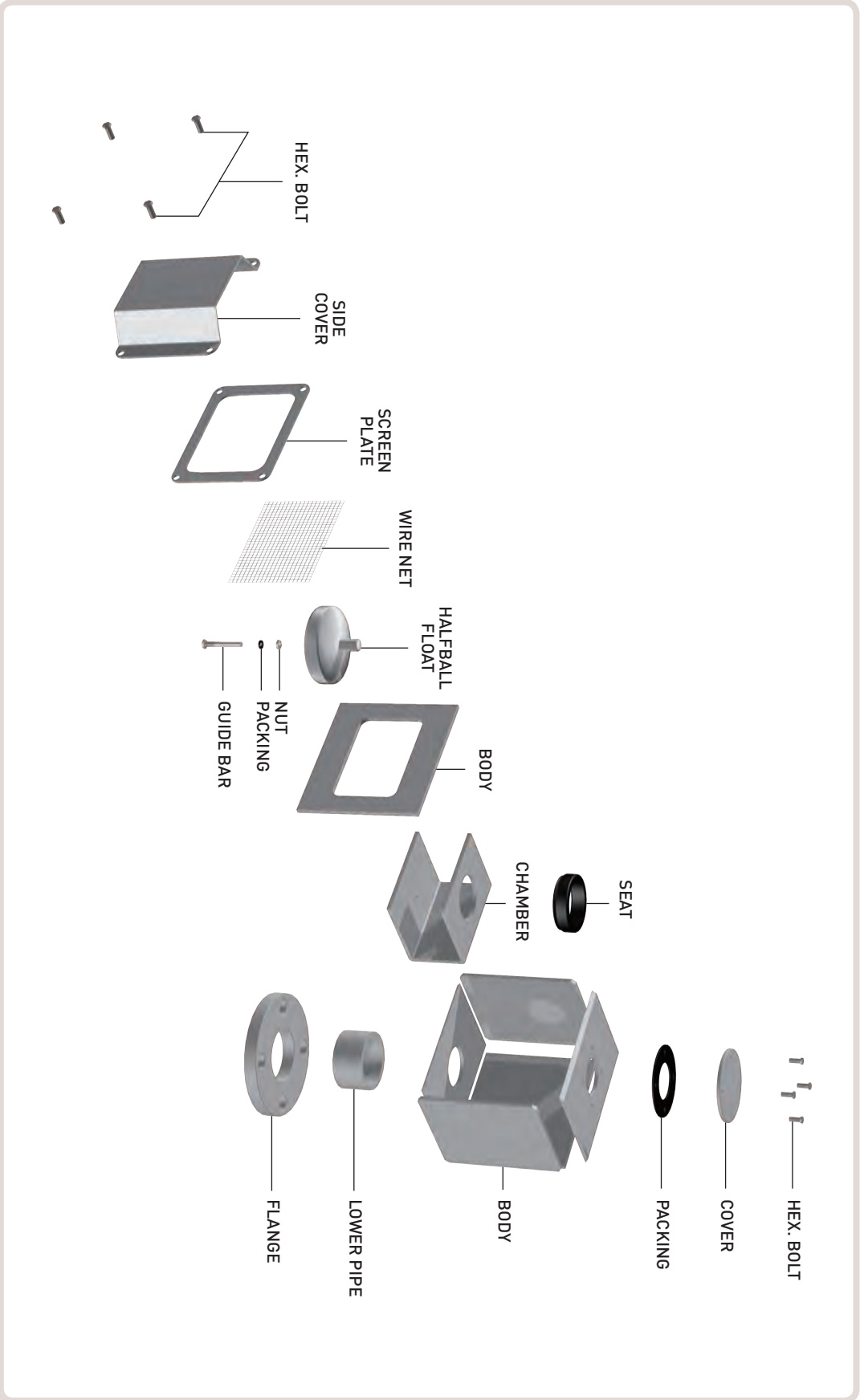
1. Flame screen with wire mesh #30 to be fitted for oil & F.W tank and W.B.T of oil & chemical carrier or wire mesh #4 for other tanks.
2. For oil & F.W system to be fitted with screen cover which upper part is closed.
3. Flange size can be changed to JIS 10K, PN10 & 150LBS as customer's requirement.

AIR VENT HEAD BOX TYPE HALFBALL FLOAT 40A ~ 80A

- PART LIST OF BOX TYPE HALFBALL FLOAT 40A ~ 80A
- DIMENSION & WEIGHT LIST FOR BOX TYPE HALFBALL FLOAT 40A ~ 80A



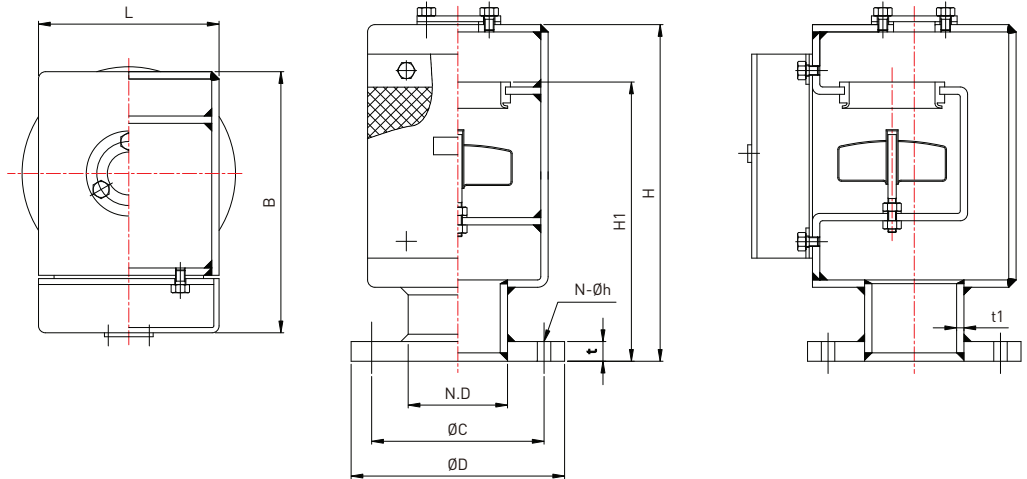
PART LIST OF BOX TYPE HALFBALL FLOAT 40A ~ 80A



BOX TYPE
HALFBALL FLOAT 40A ~ 80A

DIMENSION & WEIGHT LIST

BOX TYPE HALFBALL FLOAT 40A ~ 80A



DIMENSION

UNIT(mm)

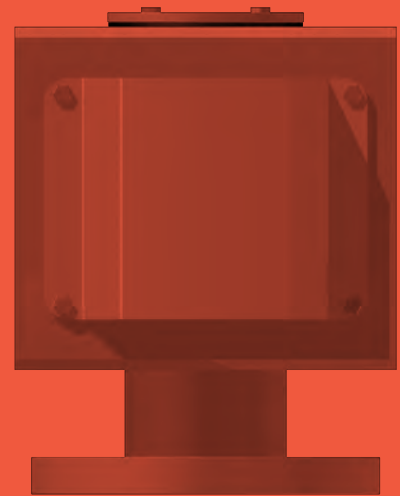
Nominal dia. (N.D)		H	H1	B	L	t1	FLANGE (JIS 5K)				Weight (kg)
mm	inch						ØD	ØC	t	N-Øh	
40A	1 ½"	234	188	153	90	6	120	95	12	4-15	7.7
50A	2"	234	188	153	90	6	130	105	14	4-15	8.2
65A	2 ½"	245	197	183	107	6	155	130	14	4-15	9.6
80A	3"	250	201	216	129	6	180	145	14	4-15	11.6

NOTE

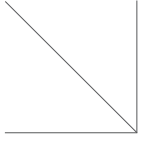
1. Flame screen with wire mesh #30 to be fitted for oil & F.W tank and W.B.T of oil & chemical carrier or wire mesh #4 for other tanks.
2. For oil & F.W system to be fitted with screen cover which upper part is closed.
3. Flange size can be changed to JIS 10K, PN10 & 150LBS as customer's requirement.

AIR VENT HEAD BOX TYPE BALL FLOAT 40A ~ 80A

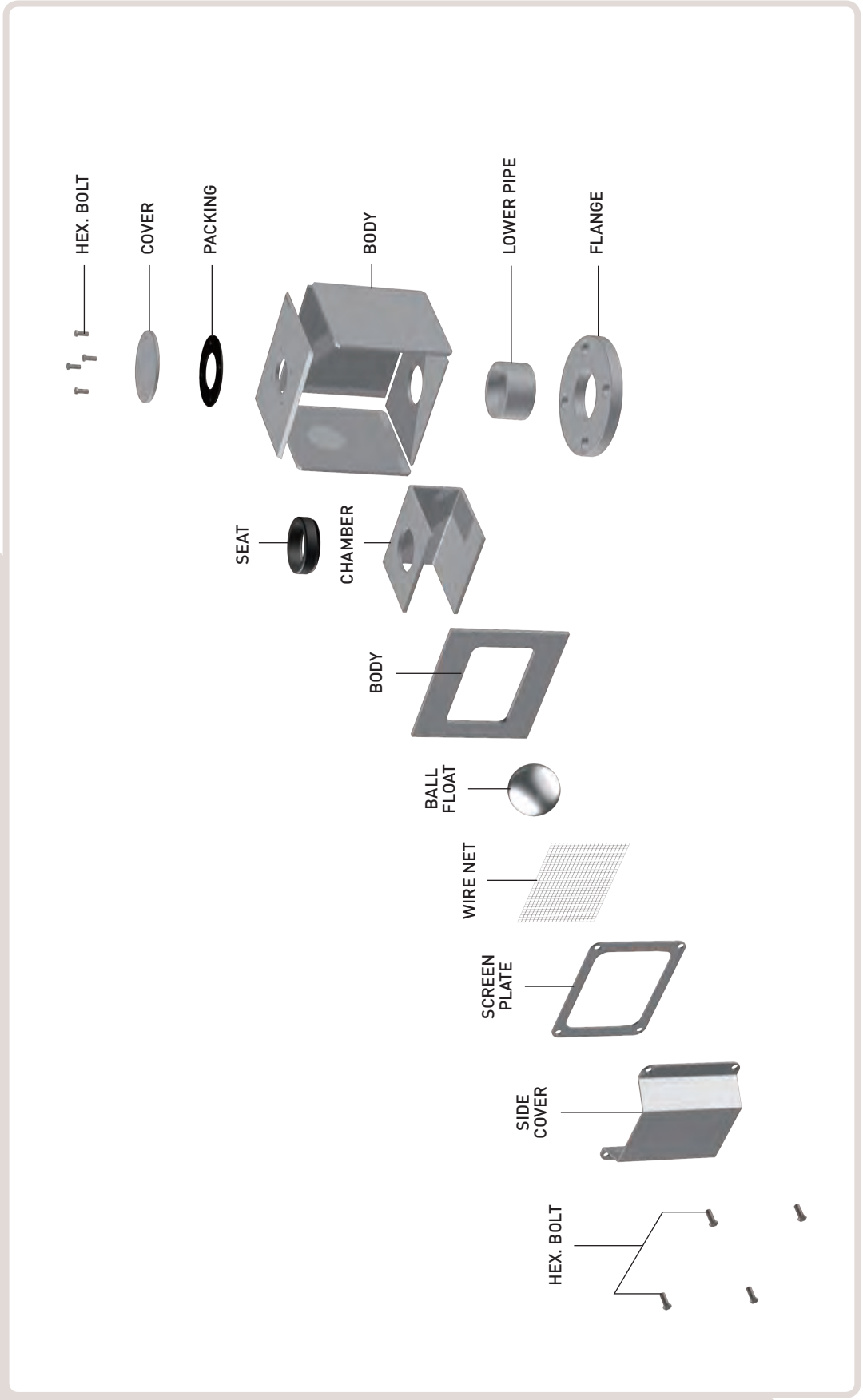
- PART LIST OF BOX TYPE BALL FLOAT 40A ~ 80A
- DIMENSION & WEIGHT LIST FOR BOX TYPE BALL FLOAT 40A ~ 80A



PART LIST OF BOX TYPE BALL FLOAT 40A ~ 80A

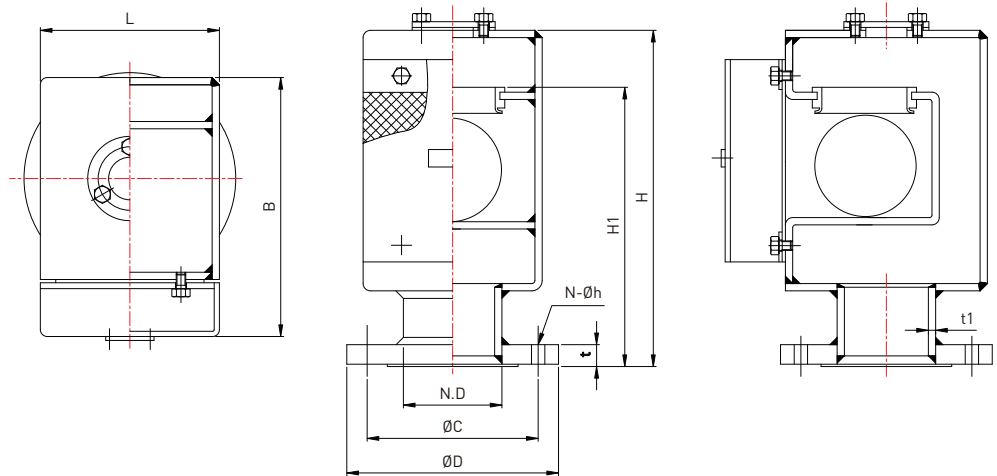


BOX TYPE BALL FLOAT
40A ~ 80A



DIMENSION & WEIGHT LIST

BOX TYPE BALL FLOAT 40A ~ 80A



DIMENSION

UNIT(mm)

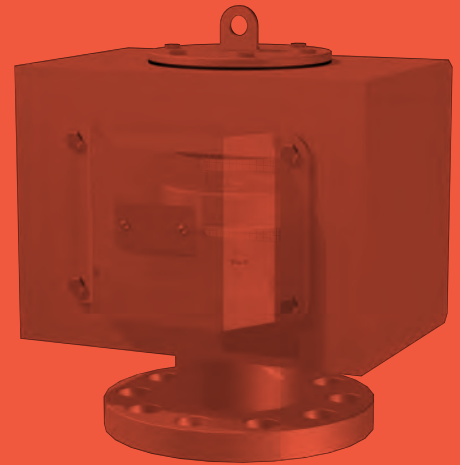
Nominal dia. (N.D)		H	H1	B	L	t1	FLANGE (JIS 5K)				Weight (kg)
mm	inch						ØD	ØC	t	N-Øh	
40A	1 ½"	251	205	153	90	7.1	120	95	12	4-15	8.1
50A	2"	251	205	153	90	8.7	130	105	14	4-15	8.6
65A	2 ½"	262	214	183	107	7.0	155	130	14	4-15	10.2
80A	3"	277	228	216	129	7.6	180	145	14	4-19	13.2

NOTE

1. Flame screen with wire mesh #30 to be fitted for oil & F.W tank and W.B.T of oil & chemical carrier or wire mesh #4 for other tanks.
2. For oil & F.W system to be fitted with screen cover which upper part is closed.
3. Flange size can be changed to JIS 10K, PN10 & 150LBS as customer's requirement.

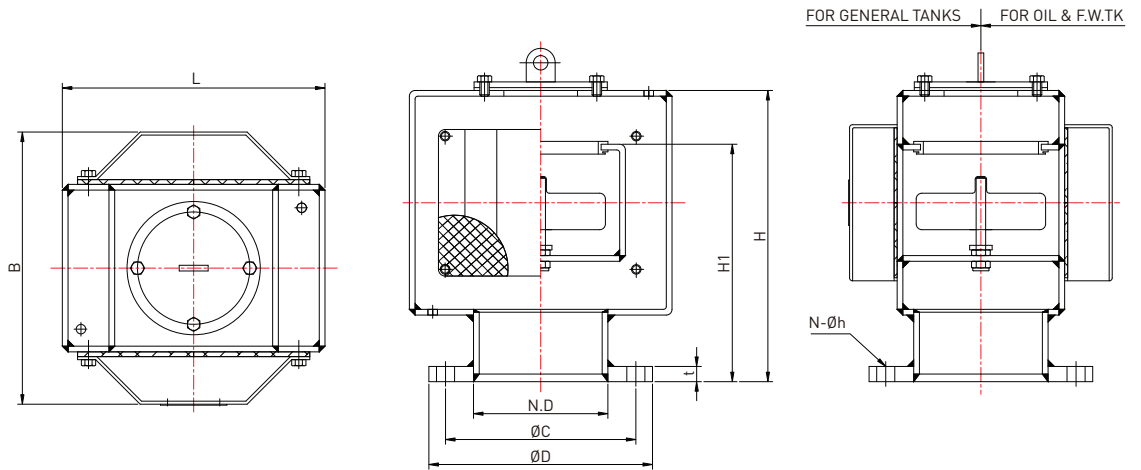
AIR VENT HEAD BOX TYPE DISC FLOAT 100A ~ 650A

- PART LIST OF BOX TYPE DISC FLOAT 100A ~ 650A
- DIMENSION & WEIGHT LIST FOR BOX TYPE DISC FLOAT 100A ~ 650A



DIMENSION & WEIGHT LIST

BOX TYPE DISC FLOAT 100A ~ 650A



DIMENSION

UNIT(mm)

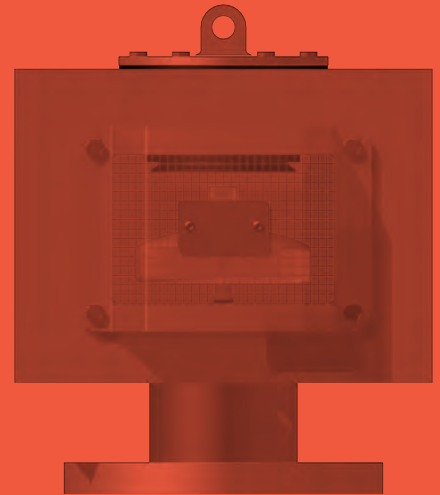
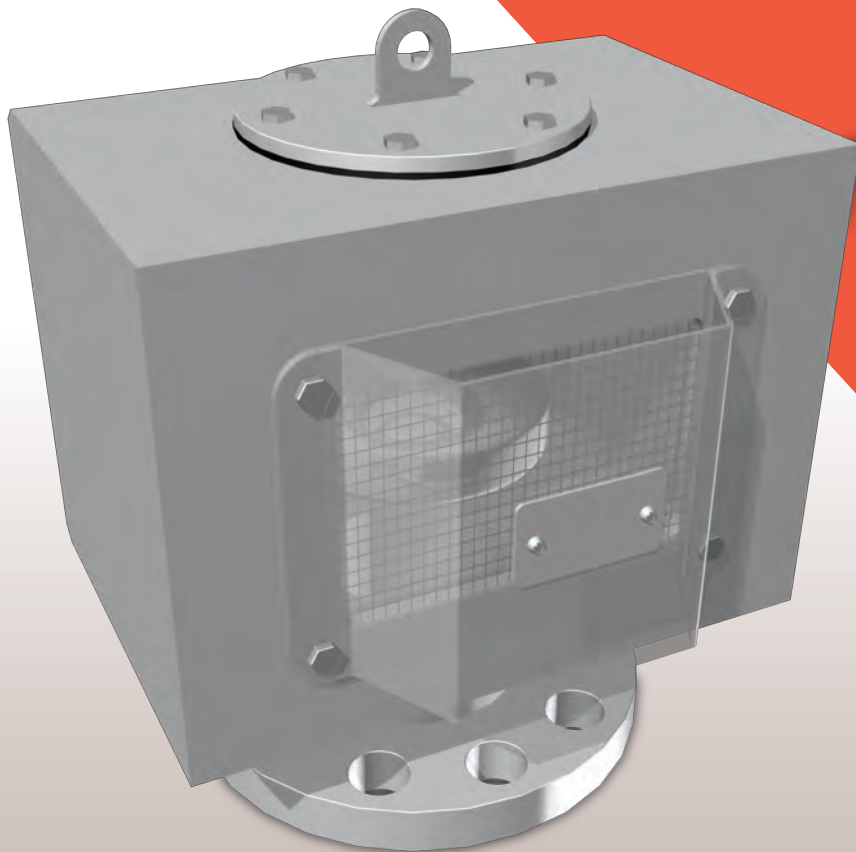
Nominal dia. (N.D)		H	H1	B	L	FLANGE (JIS 5K)				Weight (kg)
mm	inch					ØD	ØC	t	N-Øh	
100A	4"	265	228	221	229	200	165	16	4-19	16.9
125A	5"	285	244	266	260	235	200	16	8-19	21.8
150A	6"	314	268	312	304	265	230	18	8-19	29.6
200A	8"	404	335	399	390	320	280	20	8-23	46.8
250A	10"	459	373	503	487	385	345	22	12-23	70.5
300A	12"	527	424	603	577	430	390	22	12-23	82.3
350A	14"	584	465	672	644	480	435	24	12-25	112.4
400A	16"	656	521	773	735	540	495	24	16-25	143.6
450A	18"	734	581	860	809	605	555	24	16-25	170.1
500A	20"	802	639	944	898	655	605	24	20-25	216.2
550A	22"	955	760	1018	1006	720	665	26	20-27	265.8
600A	24"	1040	825	1115	1097	770	715	26	20-27	318.6
650A	26"	1121	892	1222	1192	825	770	26	20-27	365.3

NOTE

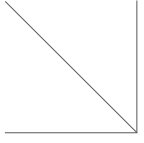
1. Flame screen with wire mesh #30 to be fitted for oil & F.W tank and W.B.T of oil & chemical carrier or wire mesh #4 for other tanks.
2. For oil & F.W system to be fitted with screen cover which upper part is closed.
3. Lifting lug to be for 150A and above size.
4. Flange size can be changed to JIS 10K, PN10 & 150LBS as customer's requirement.

AIR VENT HEAD BOX TYPE HALFBALL FLOAT 100A ~ 650A

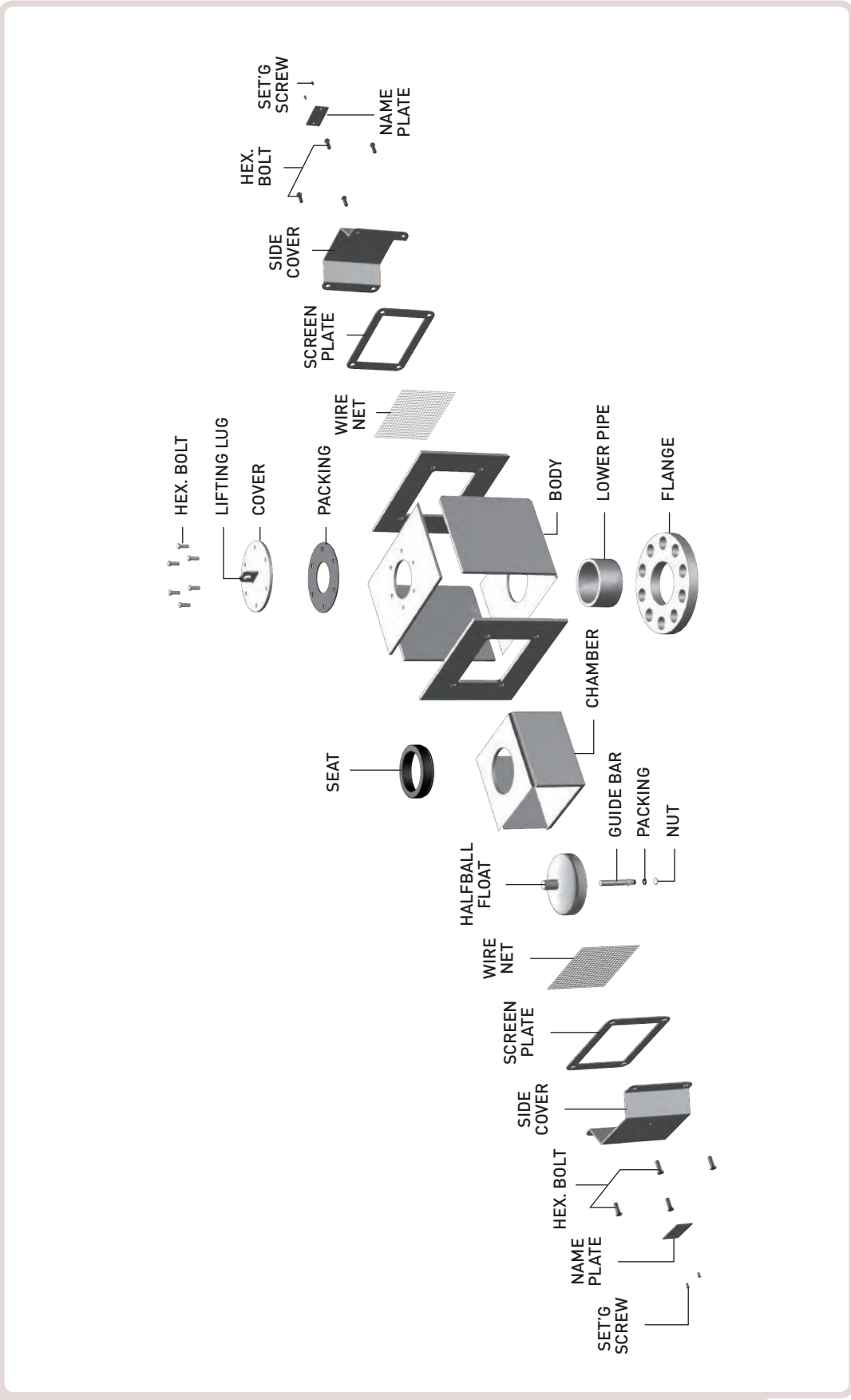
- PART LIST OF BOX TYPE HALFBALL FLOAT 100A ~ 650A
- DIMENSION & WEIGHT LIST FOR BOX TYPE HALFBALL FLOAT 100A ~ 650A



PART LIST OF BOX TYPE HALFBALL FLOAT 100A ~ 650A

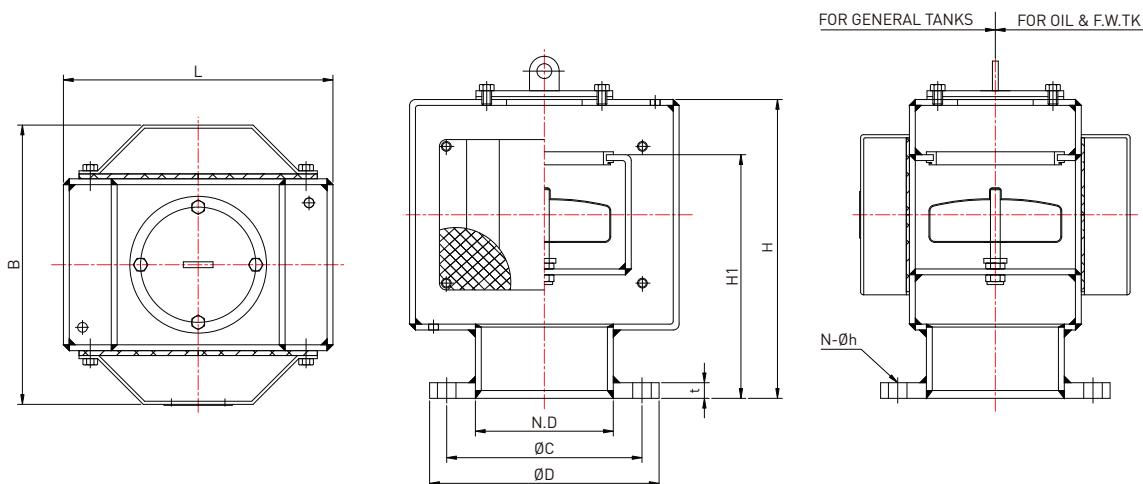


BOX TYPE HALFBALL FLOAT 100A ~ 650A



DIMENSION & WEIGHT LIST

BOX TYPE HALFBALL FLOAT 100A ~ 650A



DIMENSION

UNIT(mm)

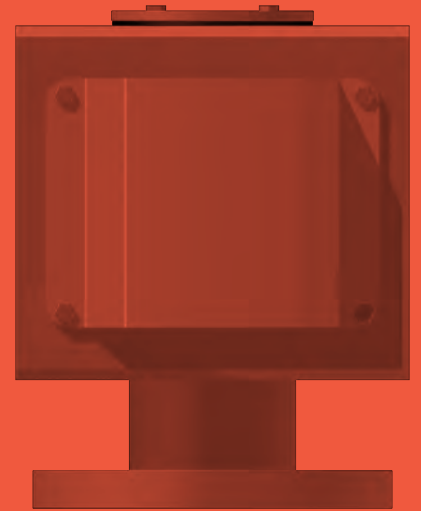
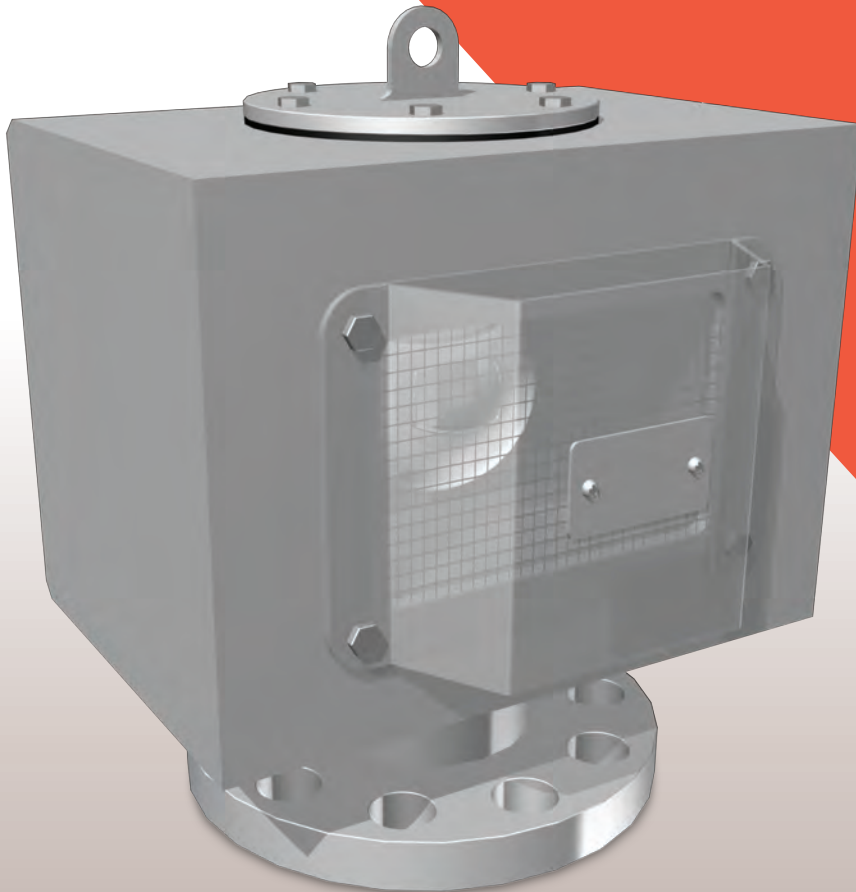
Nominal dia. (N.D)		H	H1	B	L	FLANGE (JIS 5K)				Weight (kg)
mm	inch					ØD	ØC	t	N-Øh	
100A	4"	265	228	221	229	200	165	16	4-19	16.9
125A	5"	285	244	266	260	235	200	16	8-19	21.8
150A	6"	314	268	312	304	265	230	18	8-19	29.6
200A	8"	404	335	399	390	320	280	20	8-23	46.8
250A	10"	459	373	503	487	385	345	22	12-23	70.5
300A	12"	527	424	603	577	430	390	22	12-23	82.3
350A	14"	584	465	672	644	480	435	24	12-25	112
400A	16"	656	521	773	735	540	495	24	16-25	144
450A	18"	734	581	860	809	605	555	24	16-25	170
500A	20"	802	639	944	898	655	605	24	20-25	216
550A	22"	955	760	1018	1006	720	665	26	20-27	266
600A	24"	1040	825	1115	1097	770	715	26	20-27	319
650A	26"	1121	892	1222	1192	825	770	26	20-27	365

NOTE

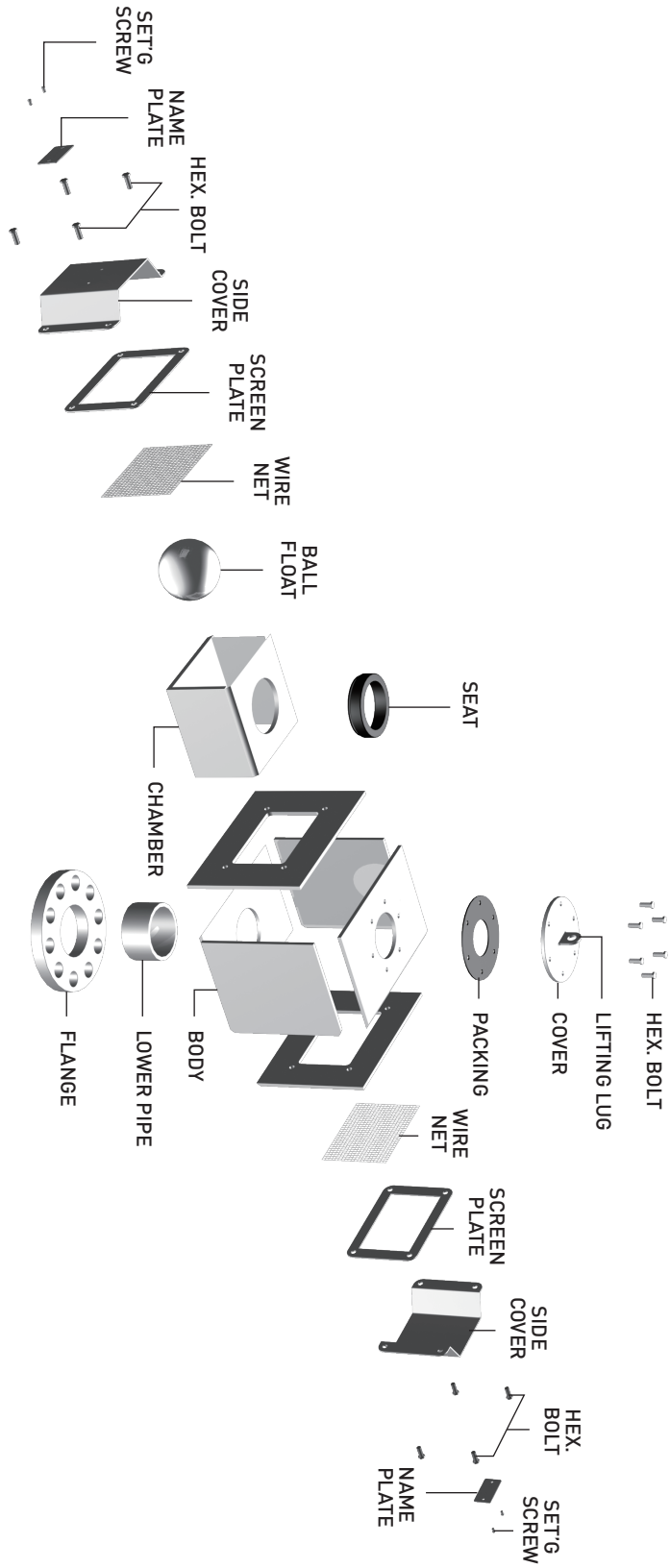
1. Flame screen with wire mesh #30 to be fitted for oil & F.W tank and W.B.T of oil & chemical carrier or wire mesh #4 for other tanks.
2. For oil & F.W system to be fitted with screen cover which upper part is closed.
3. Lifting lug to be for 150A and above size.
4. Flange size can be changed to JIS 10K, PN10 & 150LBS as customer's requirement.

AIR VENT HEAD BOX TYPE BALL FLOAT 100A ~ 650A

- PART LIST OF BOX TYPE BALL FLOAT 100A ~ 650A
- DIMENSION & WEIGHT LIST FOR BOX TYPE BALL FLOAT 100A ~ 650A



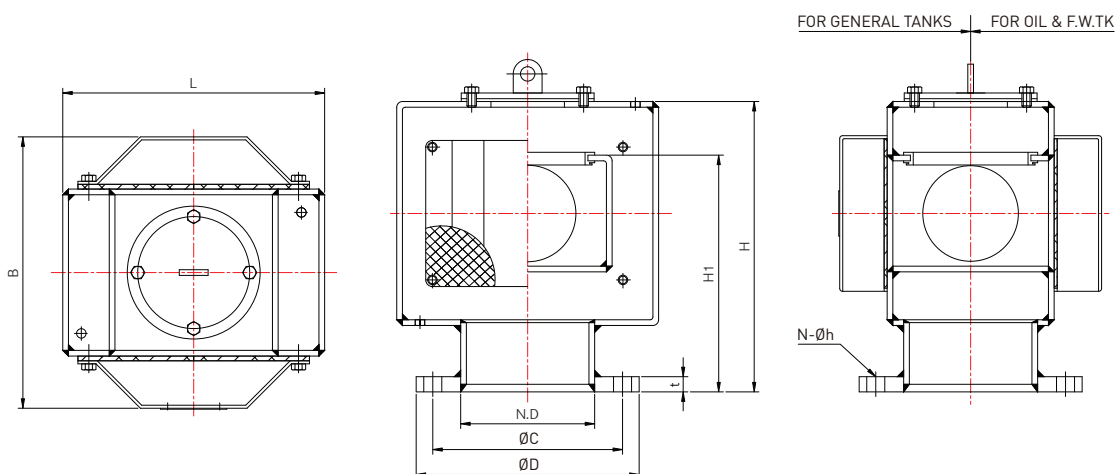
PART LIST OF BOX TYPE BALL FLOAT 100A ~ 650A



BOX TYPE BALL FLOAT
100A ~ 650A

DIMENSION & WEIGHT LIST

BOX TYPE BALL FLOAT 100A ~ 650A



DIMENSION

UNIT(mm)

Nominal dia. (N.D)		H	H1	B	L	FLANGE (JIS 5K)				Weight (kg)
mm	inch					ØD	ØC	t	N-Øh	
100A	4"	309	264	221	229	200	165	16	8-19	18.1
125A	5"	383	329	266	260	235	200	16	8-19	29.4
150A	6"	395	351	312	304	265	230	18	8-19	39.0
200A	8"	499	428	399	390	320	280	20	8-23	65.4
250A	10"	604	510	503	487	385	345	22	12-23	93.5
300A	12"	707	598	603	577	430	390	22	12-23	129.7
350A	14"	780	660	672	644	480	435	24	12-25	172.8
400A	16"	888	755	773	735	540	495	24	16-25	224.9
450A	18"	986	849	860	818	605	555	24	16-25	282.7
500A	20"	1114	940	957	911	655	605	24	20-25	349.6
550A	22"	1250	1048	1028	1014	720	665	26	20-27	442.3
600A	24"	1350	1137	1129	1109	770	715	26	20-27	521.4
650A	26"	1420	1181	1248	1229	825	770	26	20-27	612

NOTE

1. Flame screen with wire mesh #30 to be fitted for oil & F.W tank and W.B.T of oil & chemical carrier or wire mesh #4 for other tanks.
2. For oil & F.W system to be fitted with screen cover which upper part is closed.
3. Lifting lug to be for 150A and above size.
4. Flange size can be changed to JIS 10K, PN10 & 150LBS as customer's requirement.

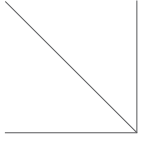
AIR VENT HEAD

PIPE FORM DISC / HALFBALL FLOAT 50A ~ 650A

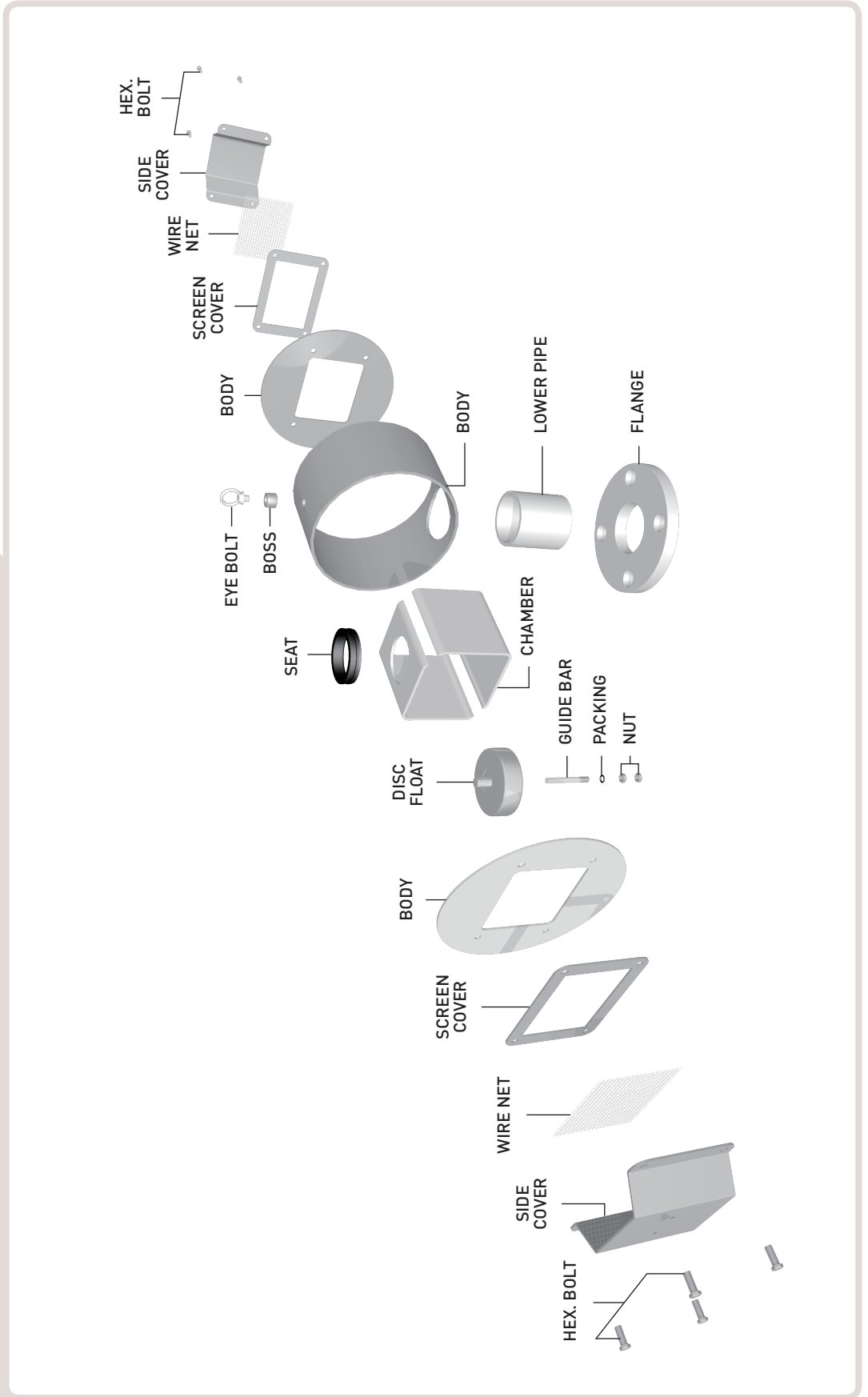
- PART LIST OF PIPE FORM DISC / HALFBALL FLOAT 50A ~ 650A
- DIMENSION & WEIGHT LIST FOR PIPE FORM DISC / HALFBALL FLOAT 50A ~ 650A



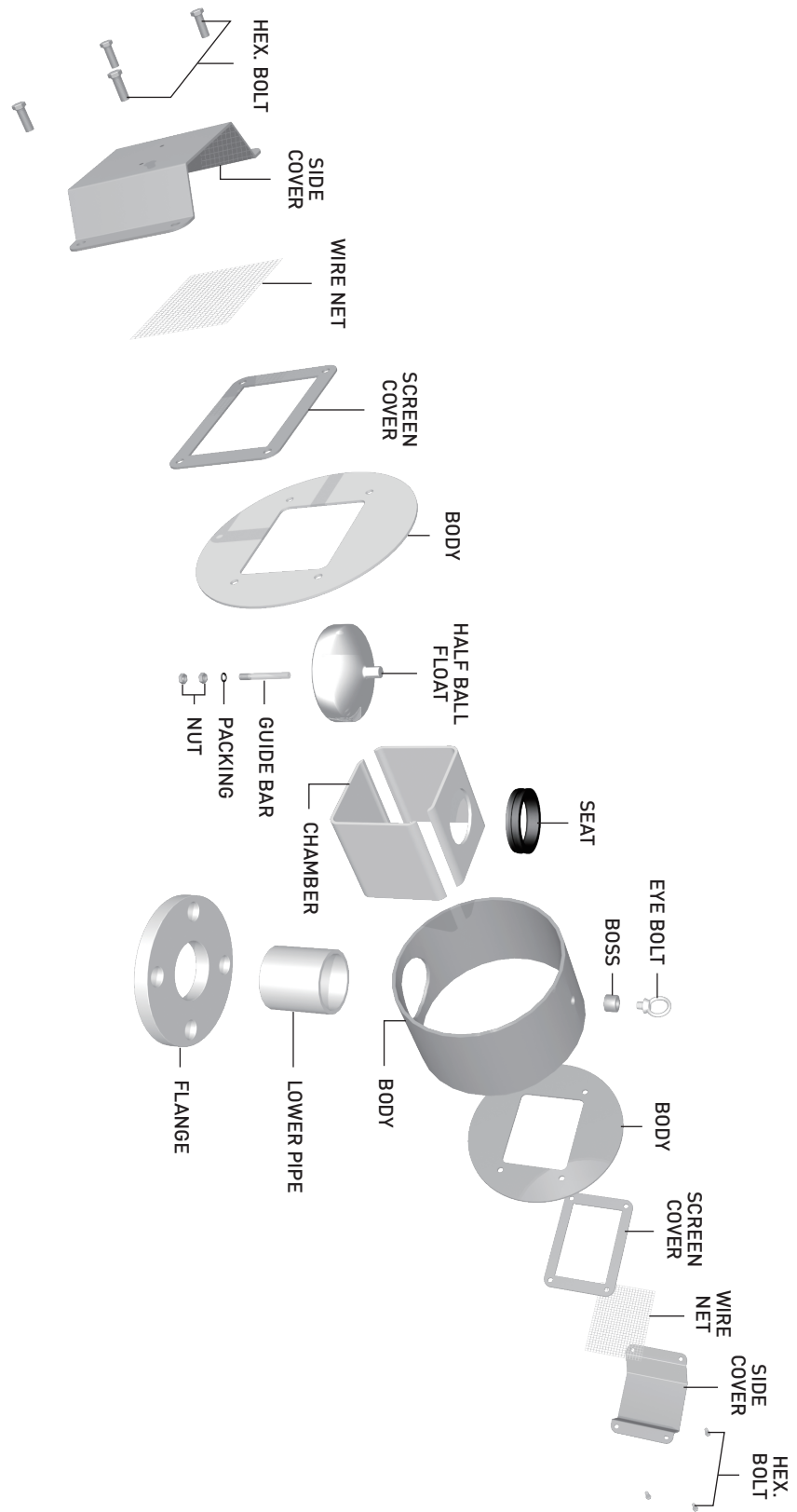
PART LIST OF PIPE FORM DISC FLOAT 50A ~ 650A



PIPE FORM DISC FLOAT
50A ~ 650A



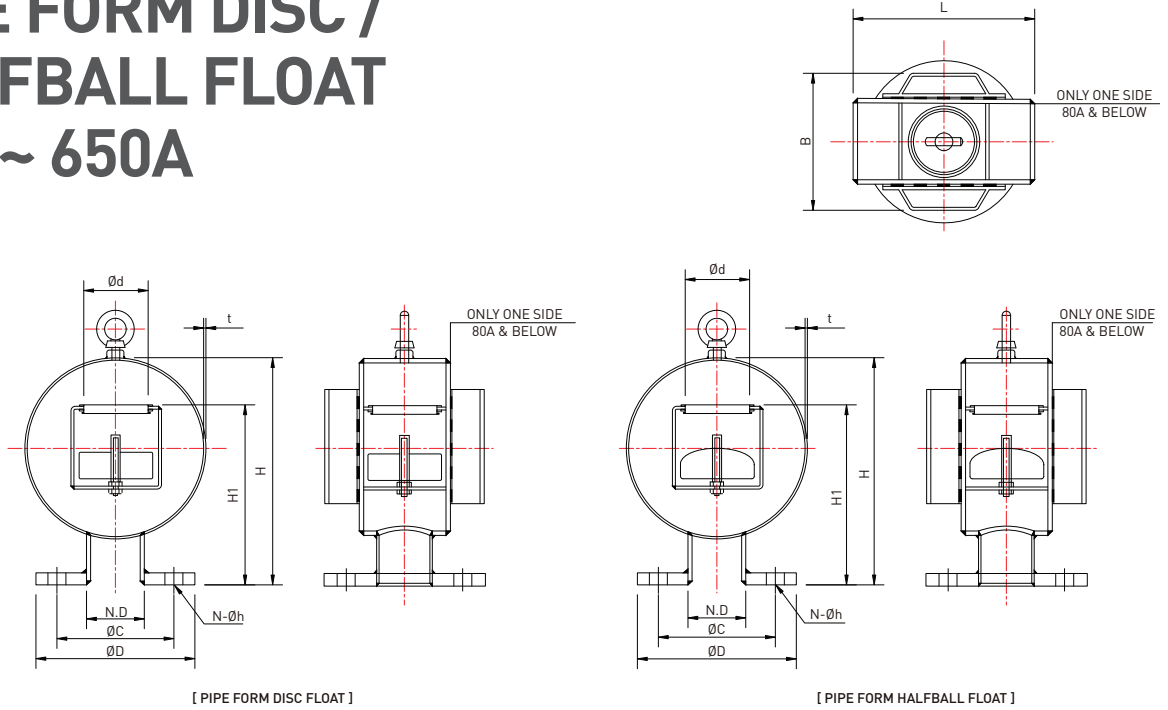
PART LIST OF PIPE FORM HALFBALL FLOAT 50A ~ 650A



PIPE FORM HALFBALL FLOAT
50A ~ 650A

DIMENSION & WEIGHT LIST

PIPE FORM DISC / HALFBALL FLOAT 50A ~ 650A



DIMENSION

UNIT(mm)

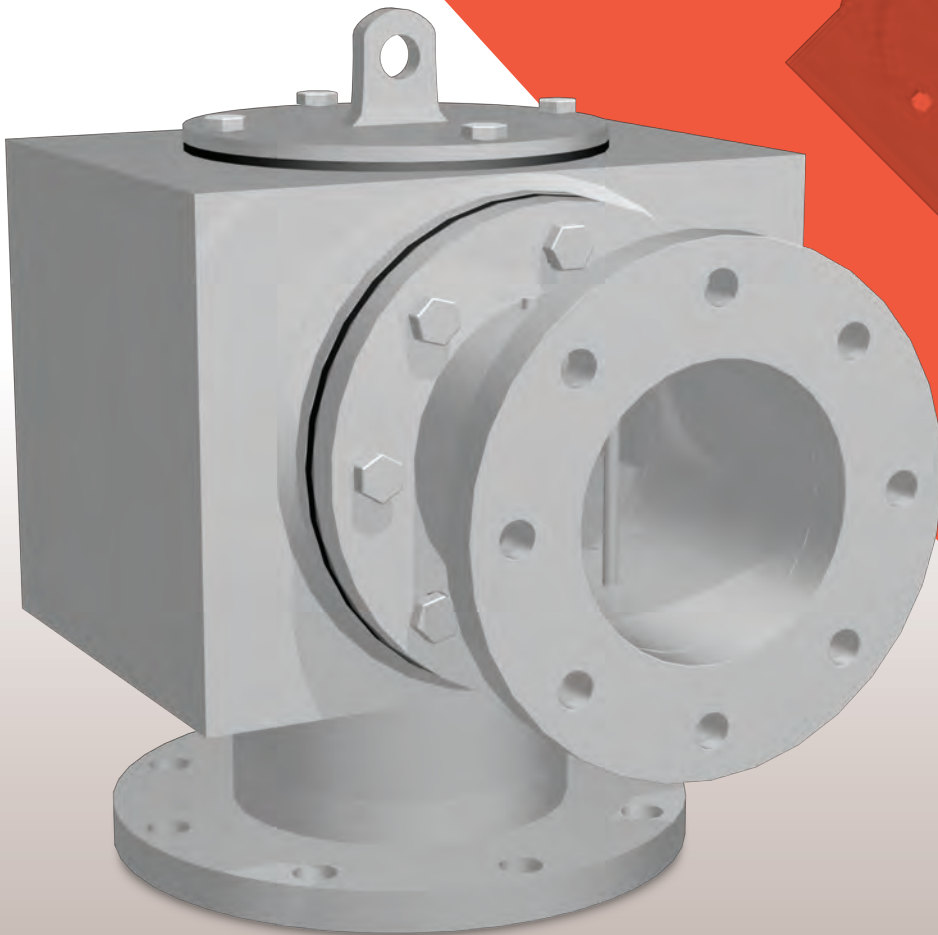
Nominal dia. (N.D)		Ød	H	H1	B	L	FLANGE (JIS 5K)				Weight (kg)
mm	inch						ØD	ØC	t	N-Øh	
50A	2"	46	225	184	152	165.2	130	105	7.1	4-15	10
65A	2"	63	276	213	157	216.3	155	130	6.4	4-15	13
80A	3"	81	276	214	178	216.3	180	145	6.4	4-19	15
100A	4"	100	337	258	254	267.4	200	165	6.4	8-19	24
125A	5"	122	338	290	286	318.5	235	200	7.0	8-19	39
150A	6"	150	425	319	330	355.6	265	230	7.6	8-19	59
200A	8"	200	537	396	409	457.2	320	280	7.9	8-23	79
250A	10"	255	626	451	514	546	385	345	7.0	12-23	116
300A	12"	300	725	517	598	635	430	390	7.0	12-23	154
350A	14"	340	805	570	674	715	480	435	7.0	12-25	181
400A	16"	392	915	645	767	815	540	495	7.0	16-25	215
450A	18"	455	1020	719	848	920	605	555	8.0	16-25	267
500A	20"	490	1130	798	904	1020	655	605	8.0	20-25	335
550A	22"	540	1270	911.5	614	1120	720	665	8.0	20-27	406
600A	24"	591	1405	1025	667	1255	770	715	9.0	20-27	457
650A	26"	650	1495	1073.5	738	1345	825	770	9.0	20-27	508

NOTE

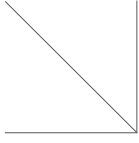
1. Flame screen with wire mesh #30 to be fitted for oil & F.W tank and W.B.T of oil & chemical carrier or wire mesh #4 for other tanks.
2. For oil & F.W system to be fitted with screen cover which upper part is closed.
3. Lifting lug to be for 150A and above size.
4. Flange size can be changed to JIS 10K, PN10 & 150LBS as customer's requirement.

AIR VENT HEAD BOX TYPE OVER FLOW HALFBALL FLOAT 100A ~ 500A [PIPE TYPE]

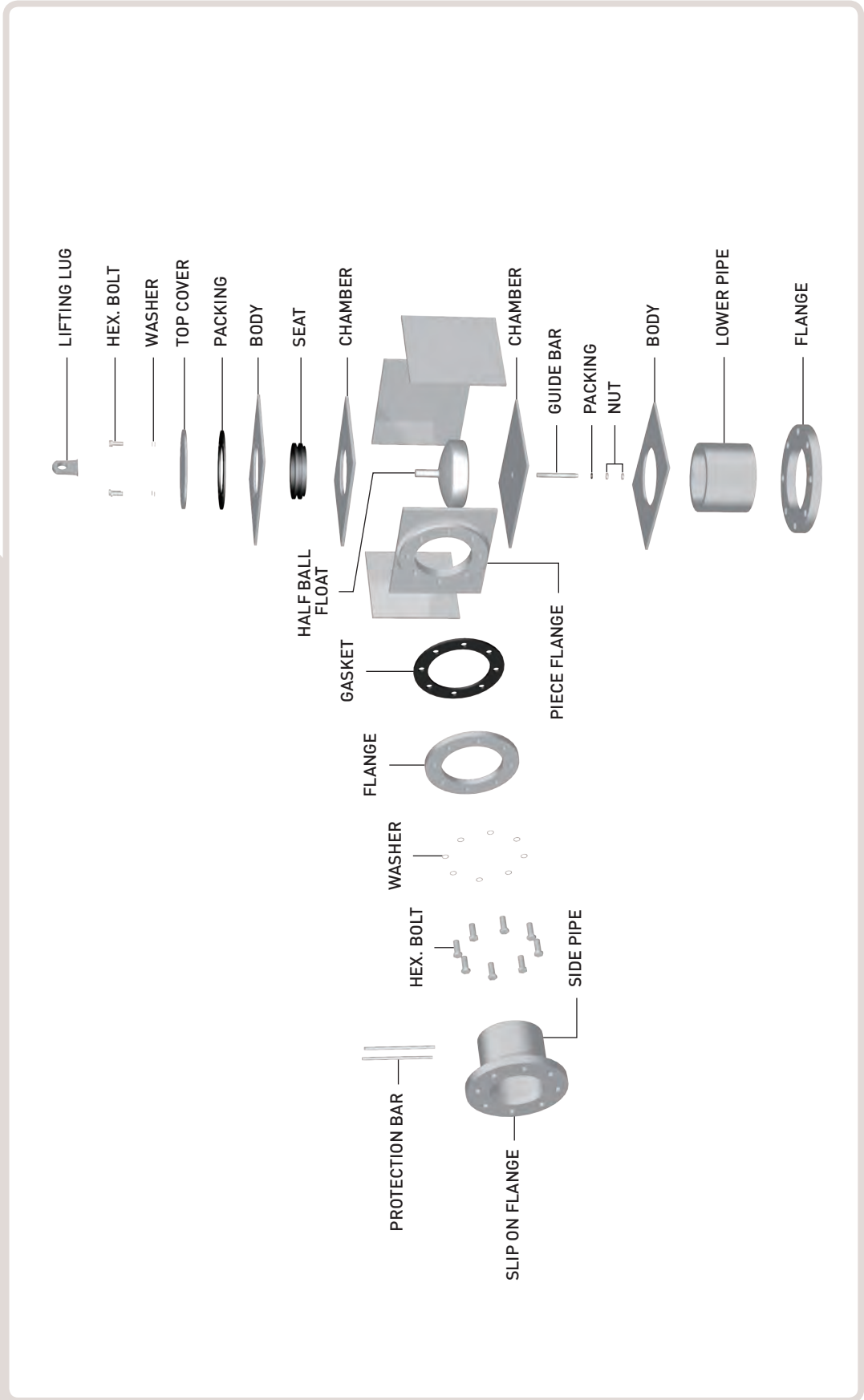
- PART LIST OF BOX TYPE OVER FLOW HALFBALL FLOAT 100A ~ 500A [PIPE TYPE]
- DIMENSION LIST FOR BOX TYPE OVER FLOW HALFBALL FLOAT 100A ~ 500A [PIPE TYPE]



BOX TYPE OVER FLOW HALFBALL FLOAT 100A ~ 500A [PIPE TYPE]

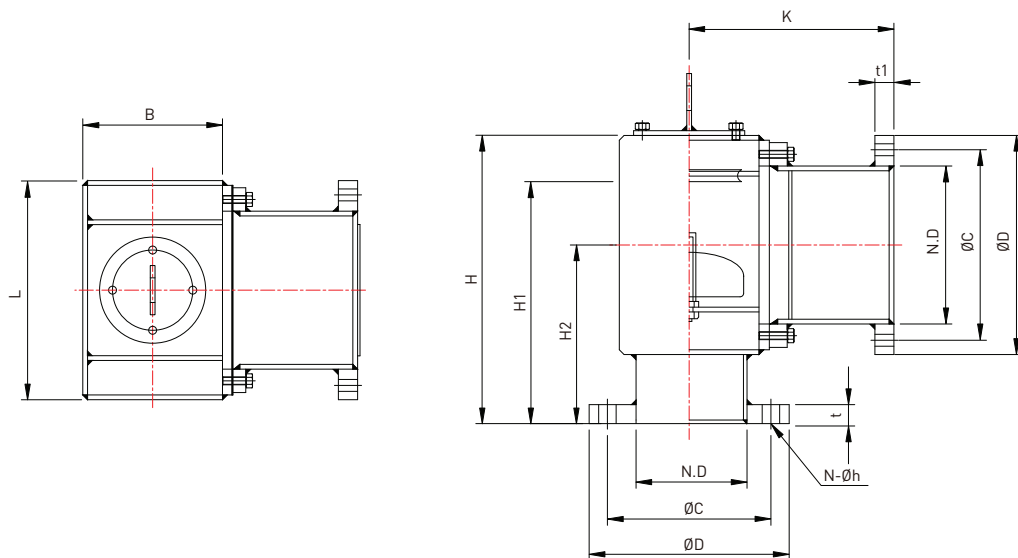


PART LIST OF BOX TYPE OVER FLOW HALFBALL FLOAT 100A ~ 500A [PIPE TYPE]



DIMENSION LIST

BOX TYPE OVER FLOW HALFBALL FLOAT 100A ~ 500A [PIPE TYPE]



DIMENSION

UNIT(mm)

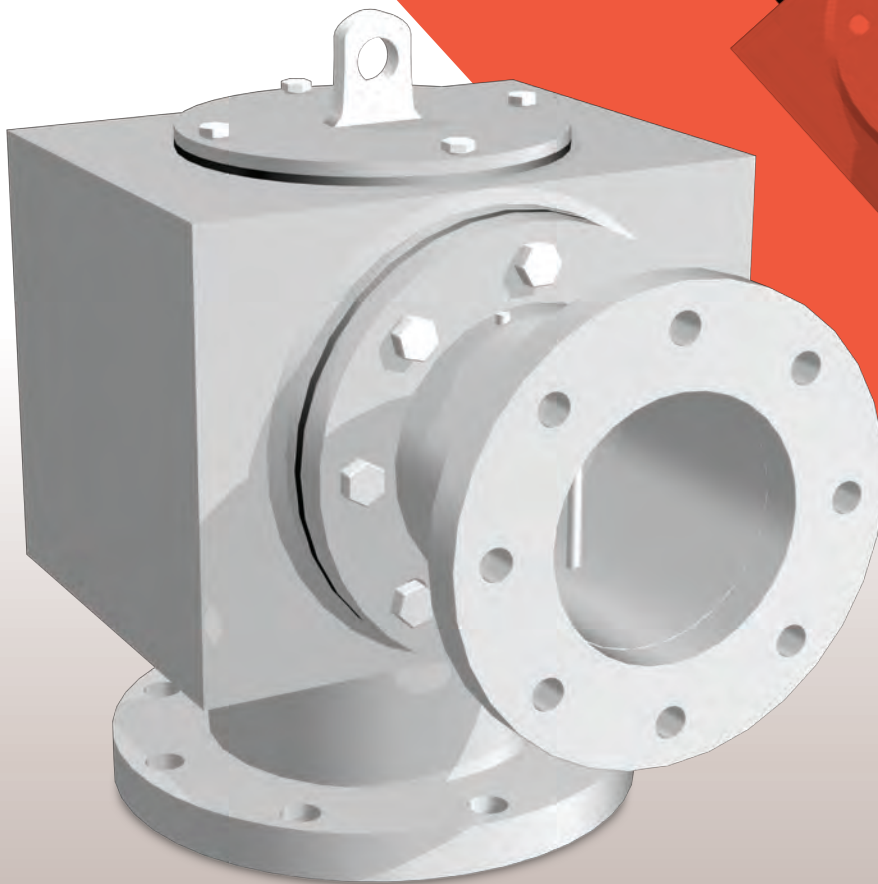
Nominal dia. (N.D)	H	H1	H2	K	B	L	t1	FLANGE (JIS 5K)			
								ØD	ØC	t	N-Øh
100A	270	225	170	160	154	232	19	200	165	16	8-19
125A	306	230	188	180	176	276	18	235	200	16	8-19
150A	323	268	196.5	210	210	318	20	265	230	18	8-19
200A	392	324	236	260	259	425	22	320	280	20	8-23
250A	440	358	260	320	314	520	22	385	345	22	12-23
300A	557	433	323.5	370	368	588	24	430	390	22	12-23
350A	584	460	337	420	414	678	24	480	435	24	12-25
400A	644	510	372	480	477	758	24	540	495	24	16-25
500A	780	623	445	570	564	917	26	655	605	24	20-25

NOTE

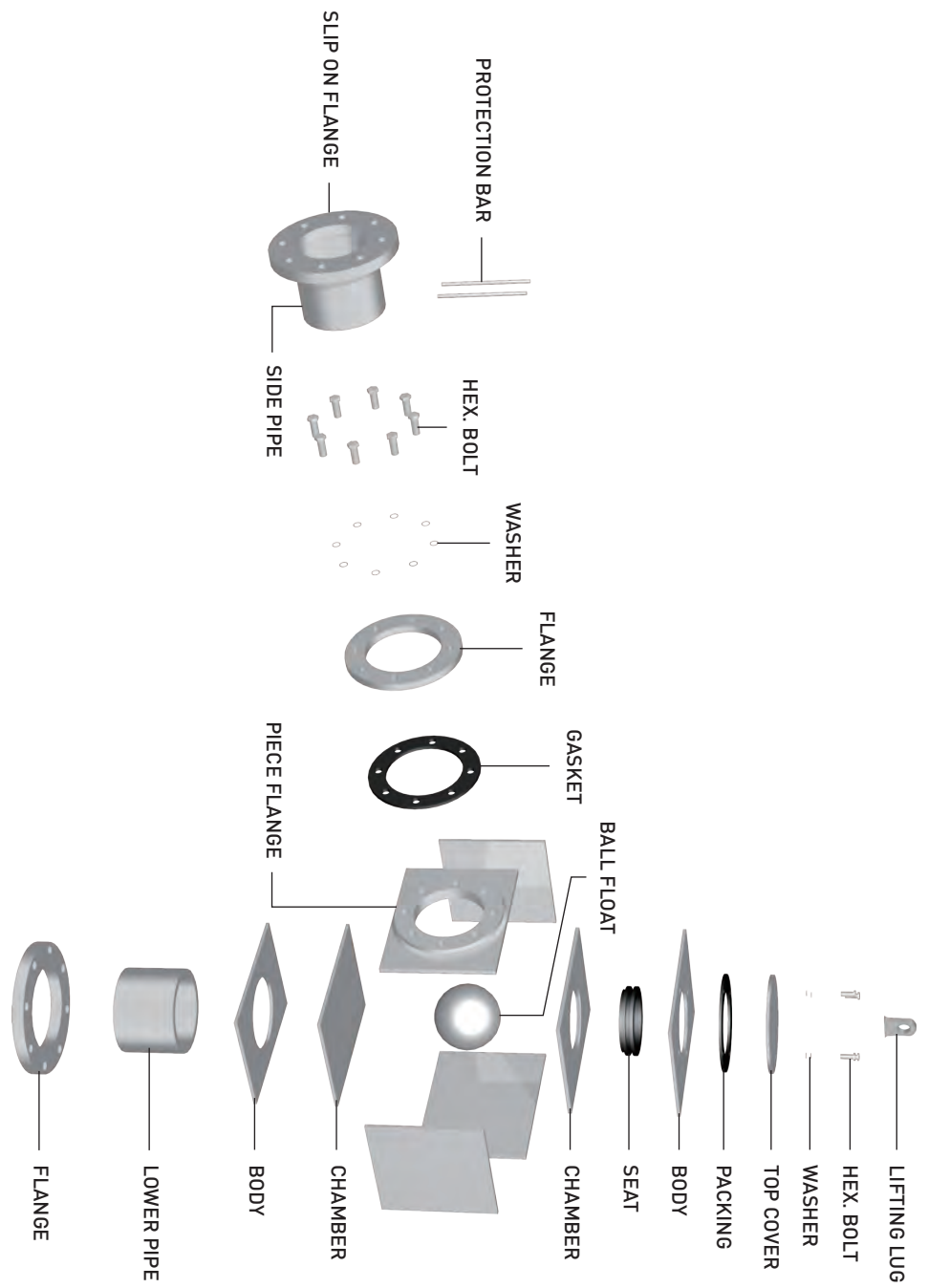
1. Dust or flame screen to be fitted according to requesting by customer.
2. Lifting lug to be for 150A and above size.
3. Flange size can be changed to JIS 10K, PN10 & 150LBS as customer's requirement.

AIR VENT HEAD BOX TYPE OVER FLOW BALL FLOAT 100A ~ 500A [PIPE TYPE]

- PART LIST OF BOX TYPE OVER FLOW BALL FLOAT 100A ~ 500A [PIPE TYPE]
- DIMENSION LIST FOR BOX TYPE OVER FLOW BALL FLOAT 100A ~ 500A [PIPE TYPE]



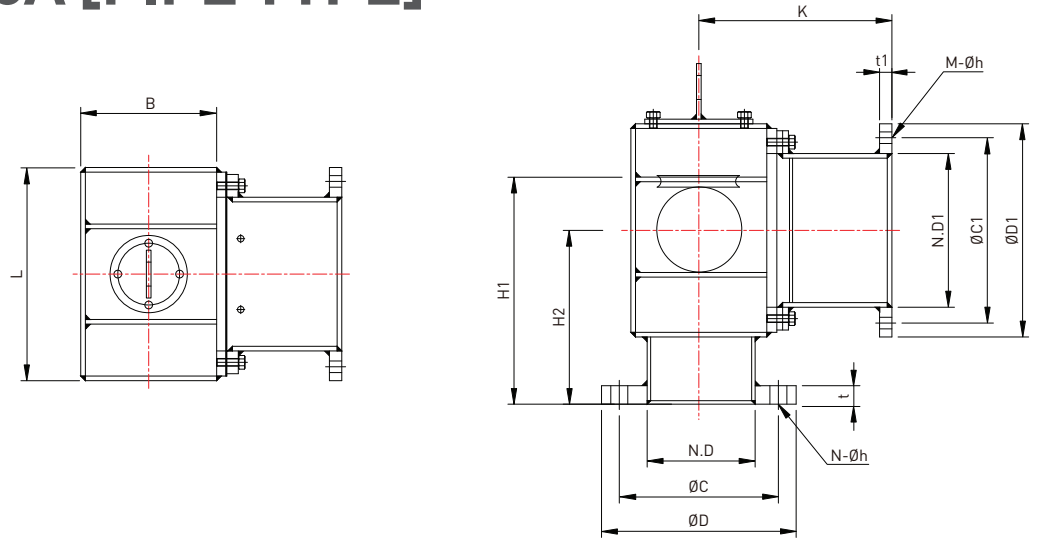
PART LIST OF BOX TYPE OVER FLOW BALL FLOAT 100A ~ 500A [PIPE TYPE]



BOX TYPE
OVER FLOW BALL FLOAT
100A ~ 500A [PIPE TYPE]

DIMENSION LIST

BOX TYPE OVER FLOW BALL FLOAT 100A ~ 500A [PIPE TYPE]



DIMENSION

UNIT(mm)

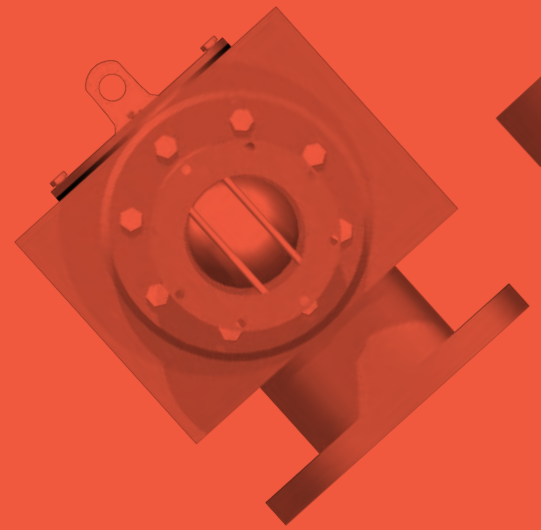
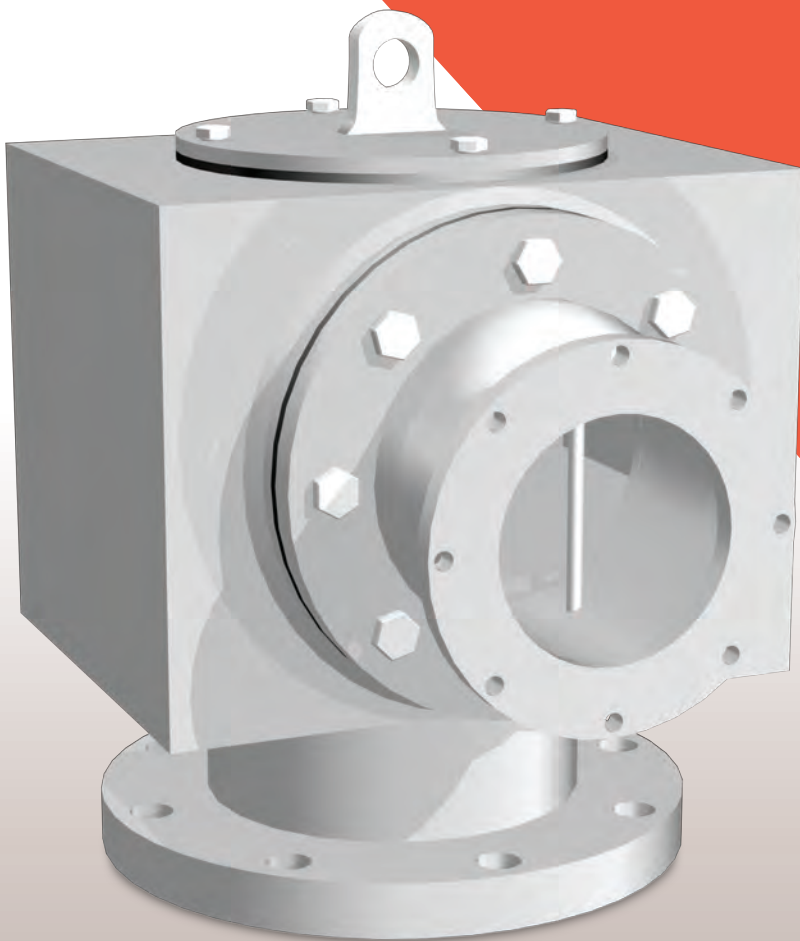
Nominal dia. (N.D)	N.D1	H1	H2	K	B	L	øD1	øC1	t1	M-øh	FLANGE (JIS 5K)			
											øD	øC	t	N-øh
100A	125	264	189.5	160	154	232	235	200	19	8-19	200	165	16	8-19
125A	150	307	226.5	180	176	276	265	230	18	8-19	235	200	16	8-19
150A	200	355	240	210	210	318	320	280	20	8-23	265	230	18	8-19
200A	250	426	287	260	259	425	385	345	22	12-23	320	280	20	8-23
250A	300	497	329.5	320	314	520	430	390	22	12-23	385	345	22	12-23
300A	350	612	416	370	368	588	480	435	24	12-25	430	390	22	12-23
350A	400	664	474	420	414	678	540	495	24	16-25	480	435	24	12-25
400A	450	718	476	480	477	758	605	555	24	16-25	540	495	24	16-25
500A	550	906	586.5	570	564	917	720	665	26	20-27	655	605	24	20-25

NOTE

1. Dust or flame screen to be fitted according to requesting by customer.
2. Lifting lug to be for 150A and above size.
3. Flange size can be changed to JIS 10K, PN10 & 150LBS as customer's requirement.

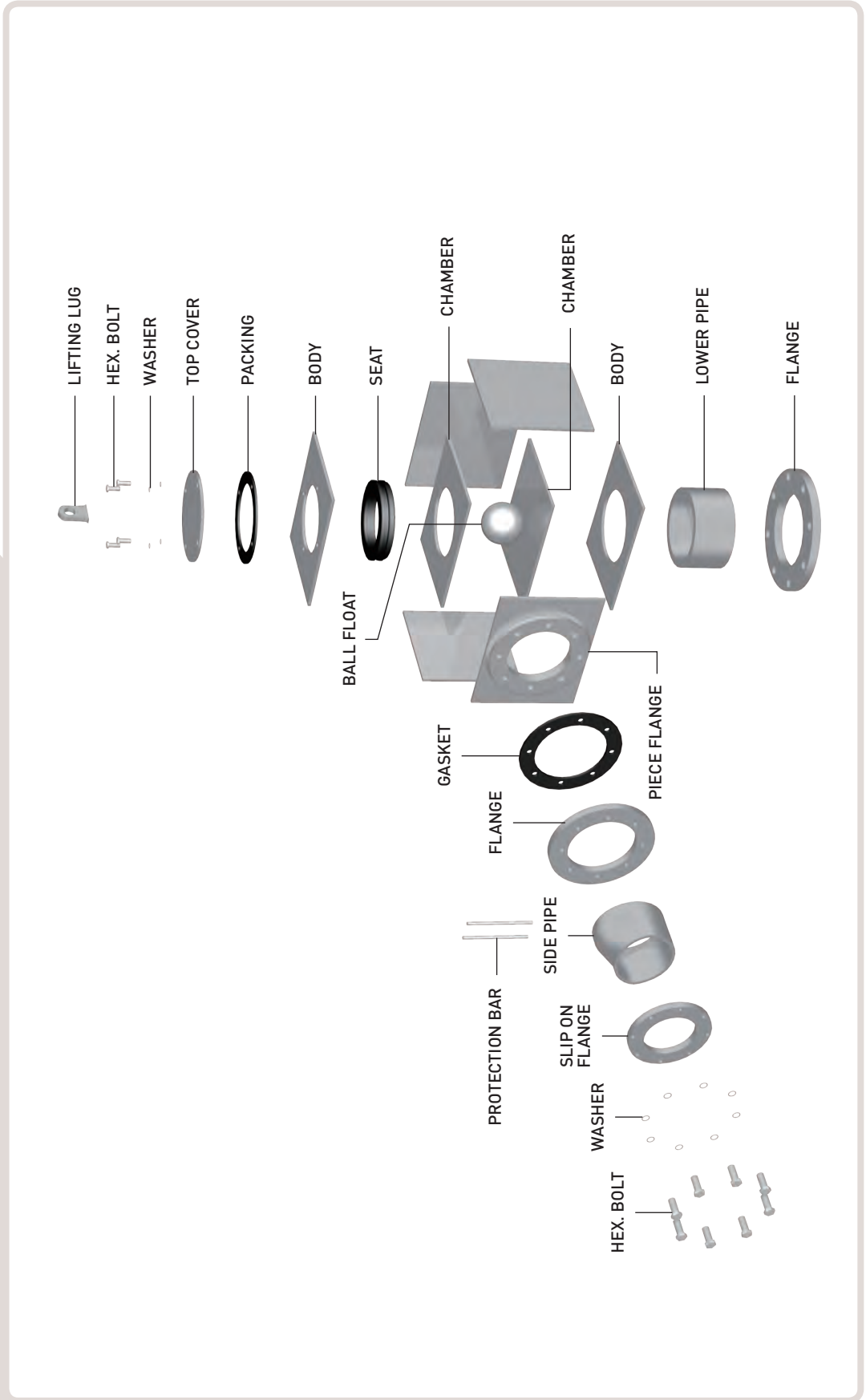
AIR VENT HEAD BOX TYPE OVER FLOW BALL FLOAT 100A ~ 500A [REDUCER TYPE]

- PART LIST OF BOX TYPE OVER FLOW BALL FLOAT 100A ~ 500A [REDUCER TYPE]
- DIMENSION LIST FOR BOX TYPE OVER FLOW BALL FLOAT 100A ~ 500A [REDUCER TYPE]



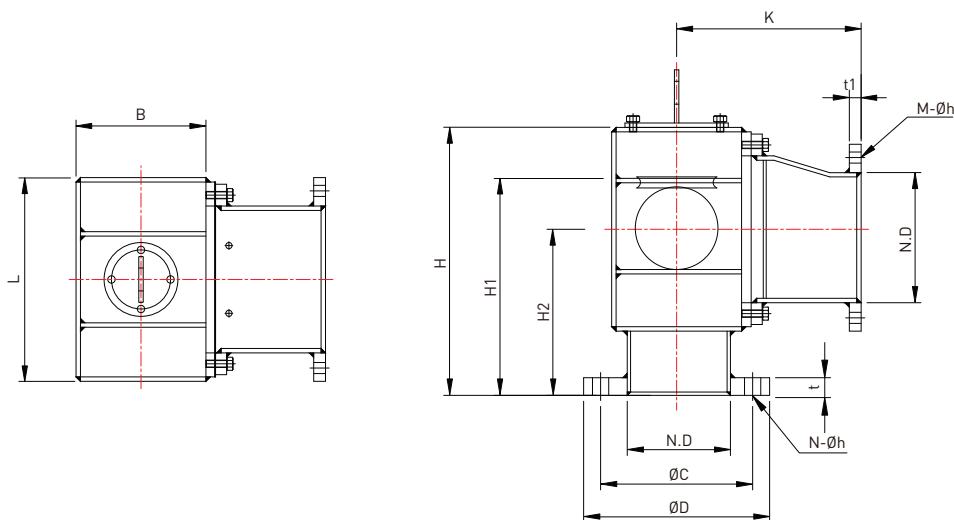
PART LIST OF BOX TYPE OVER FLOW BALL FLOAT 100A ~ 500A [REDUCER TYPE]

BOX TYPE
OVER FLOW BALL FLOAT
100A ~ 500A [REDUCER TYPE]



DIMENSION LIST

BOX TYPE OVER FLOW BALL FLOAT 100A ~ 500A [REDUCER TYPE]



DIMENSION

UNIT(mm)

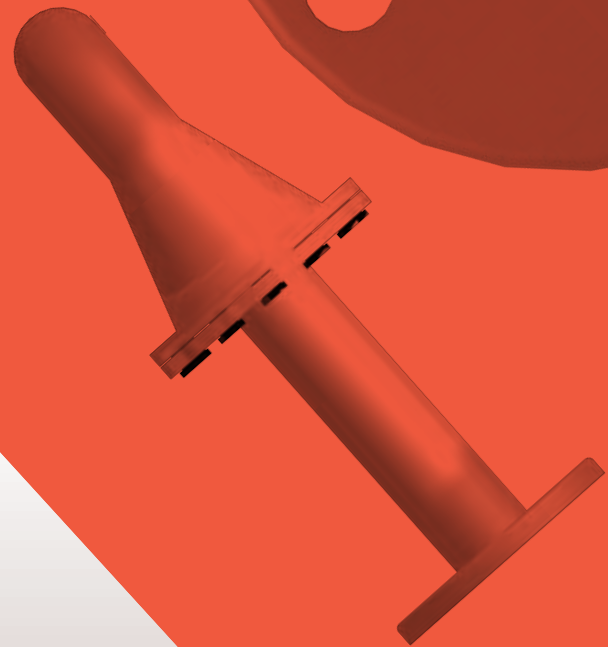
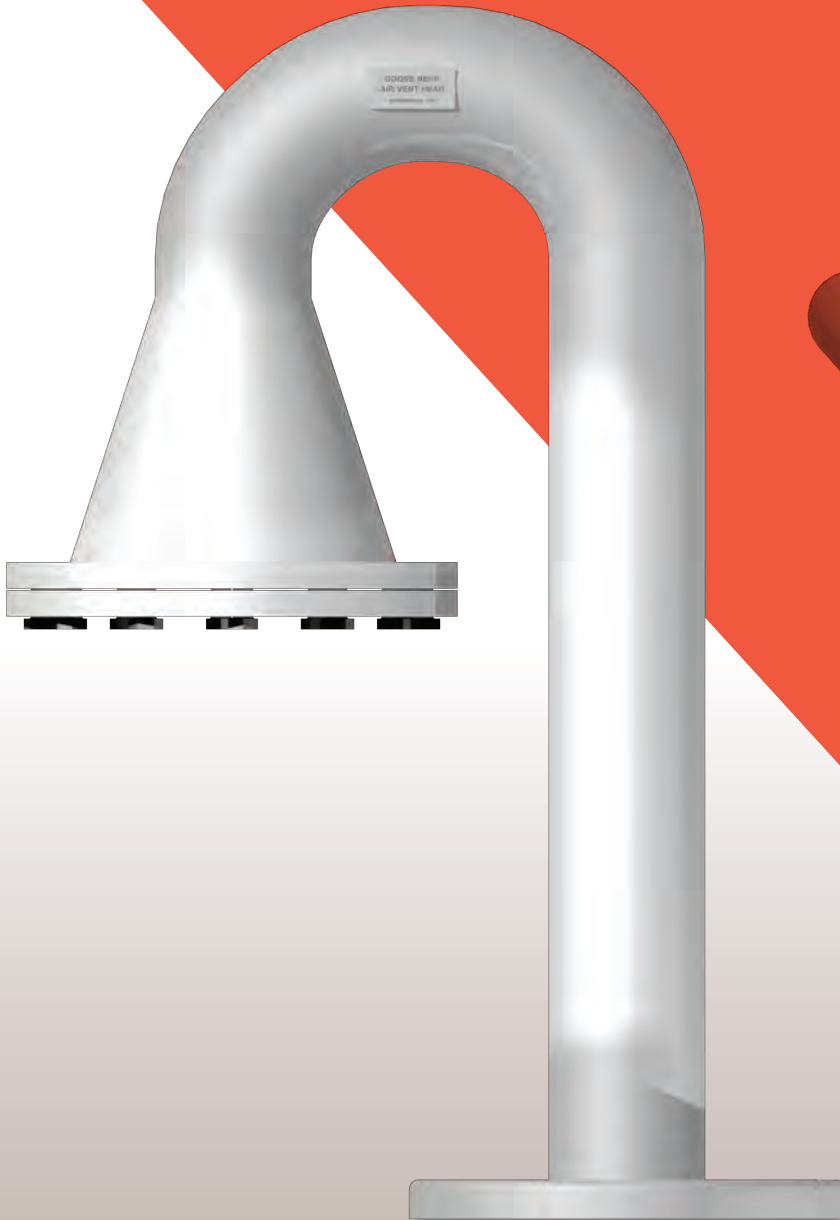
Nominal dia. (N.D)	H	H1	H2	K	B	L	t1	M-Øh	FLANGE (JIS 5K)			
									ØD	ØC	t	N-Øh
100A	309	264	176.8	239	154	232	16	8-19	200	165	16	8-19
125A	383	307	213.8	263	176	276	18	8-19	235	200	16	8-19
150A	410	355	214.5	292	210	318	20	8-23	265	230	18	8-19
200A	494	426	261.5	342	259	425	22	12-23	320	280	20	8-23
250A	579	497	304	395	314	520	22	12-23	385	345	22	12-23
300A	736	612	394.5	549	368	588	24	12-25	430	390	22	12-23
350A	786	664	418.6	608	414	678	24	16-25	480	435	24	12-25
400A	852	718	450.6	654	477	758	24	16-25	540	495	24	16-25
500A	1063	906	561.1	825	564	917	26	20-27	655	605	24	20-25

NOTE

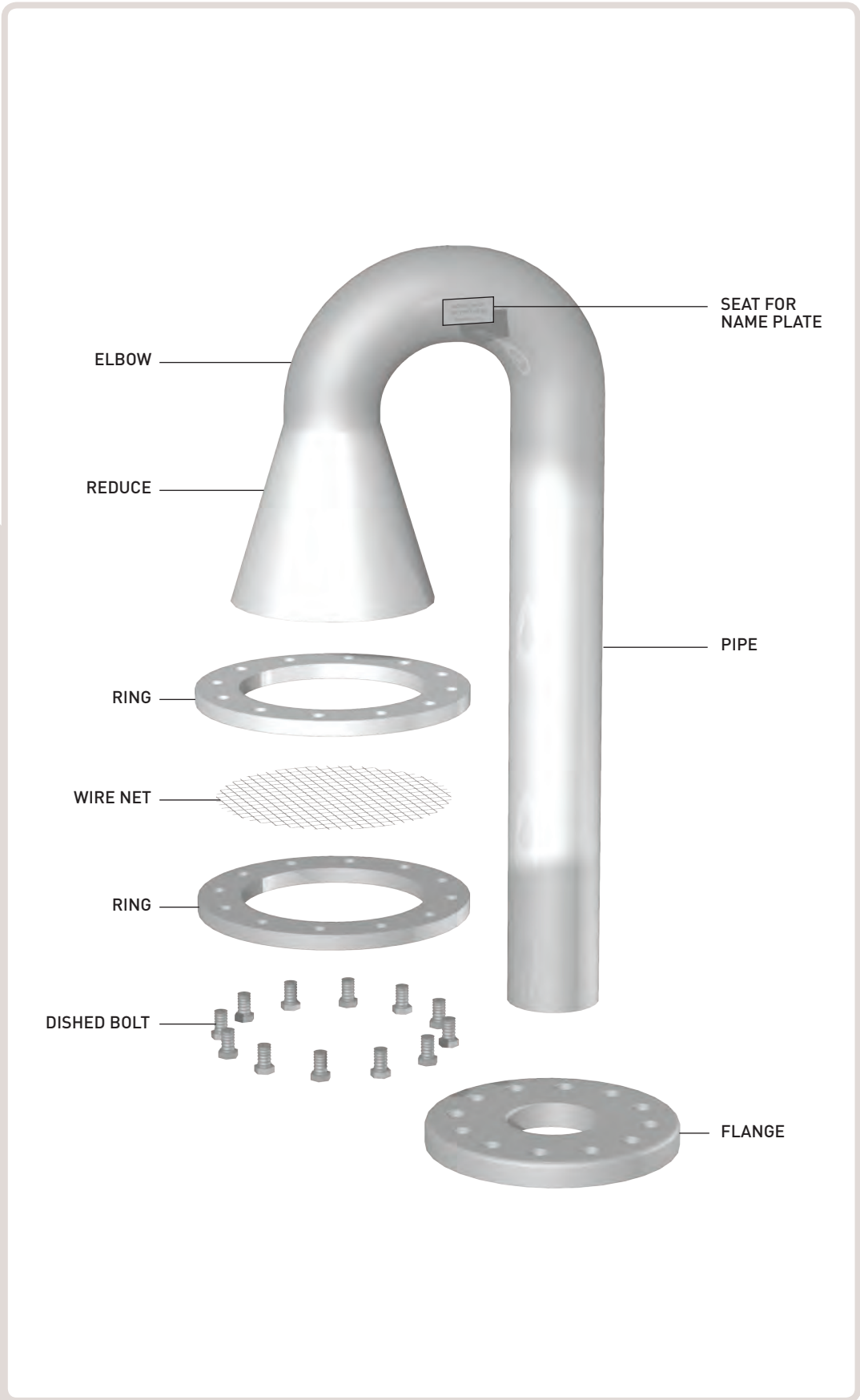
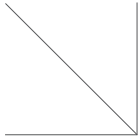
1. Dust or flame screen to be fitted according to requesting by customer.
2. Lifting lug to be for 150A and above size.
3. Flange size can be changed to JIS 10K, PN10 & 150LBS as customer's requirement.

AIR VENT HEAD GOOSE NECK AIR VENT HEAD

- PART LIST OF GOOSE NECK AIR VENT HEAD
- DIMENSION LIST FOR GOOSE NECK AIR VENT HEAD



PART LIST OF GOOSE NECK AIR VENT HEAD

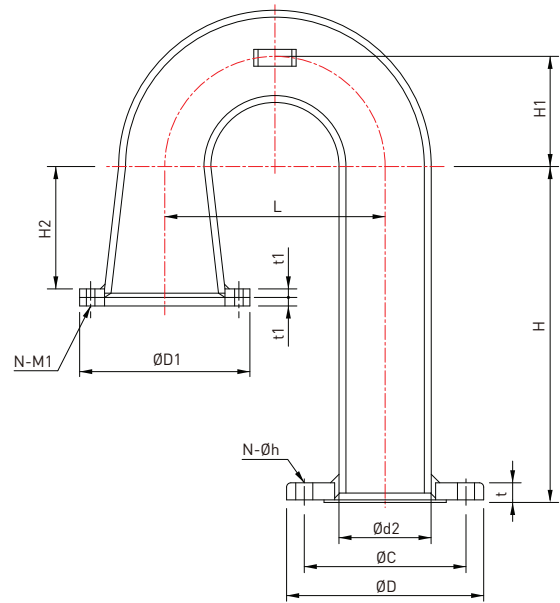


GOOSE NECK
AIR VENT HEAD

DIMENSION LIST

GOOSE NECK AIR VENT HEAD

AIR VENT HEAD



DIMENSION

UNIT(mm)

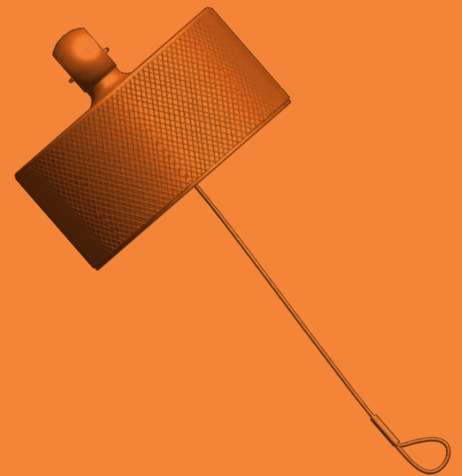
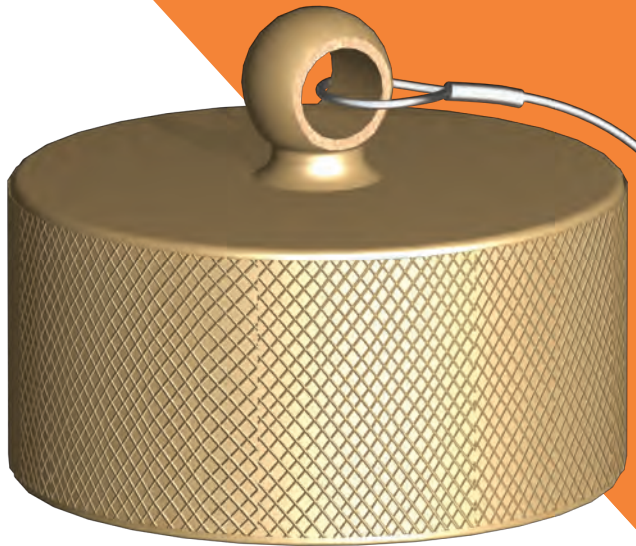
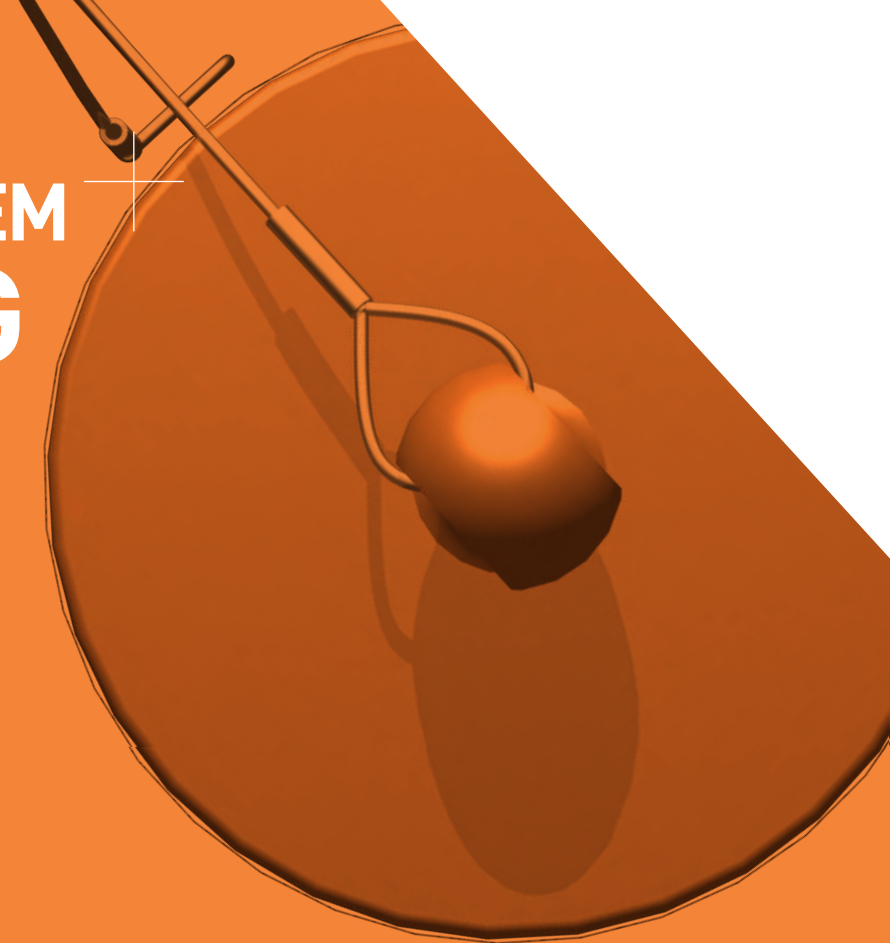
Nominal dia. (N.D)		Ød2	ØD1	H	H1	H2	L	t1	N-M1	FLANGE (JIS 5K)			
mm	inch									ØD	ØC	t	N-Øh
40A	1 ½"	48.6	100	300	57.2	71.2	114.4	6	4-M4	120	95	12	4-15
50A	2"	60.5	110	300	76.2	83.9	152.4	6	4-M4	130	105	14	4-15
65A	2 ½"	76.3	120	300	95.3	83.9	190.6	6	4-M4	155	130	14	4-15
80A	3"	89.1	150	300	76.3	96.6	152.4	6	4-M4	180	145	14	4-19
100A	4"	114.3	177	400	101.6	122	203.2	8	6-M6	200	165	16	8-19
125A	5"	139.8	203	400	127	134.7	254	8	6-M6	235	200	16	8-19
150A	6"	165.2	260	400	152.4	147.4	304.8	8	6-M6	265	230	18	8-19
200A	8"	216.3	325	500	203.2	172.8	406.4	10	8-M10	320	280	20	8-23
250A	10"	267.4	375	500	254	198.2	508	12	12-M10	385	345	22	12-23
300A	12"	318.5	413	700	304.2	325.2	609.6	12	12-M10	430	390	22	12-23
350A	14"	355.6	463	700	355.6	354.6	711.2	12	12-M10	480	435	24	12-25
400A	16"	406.4	520	700	406.4	376	812.8	12	12-M10	540	495	24	16-25

NOTE

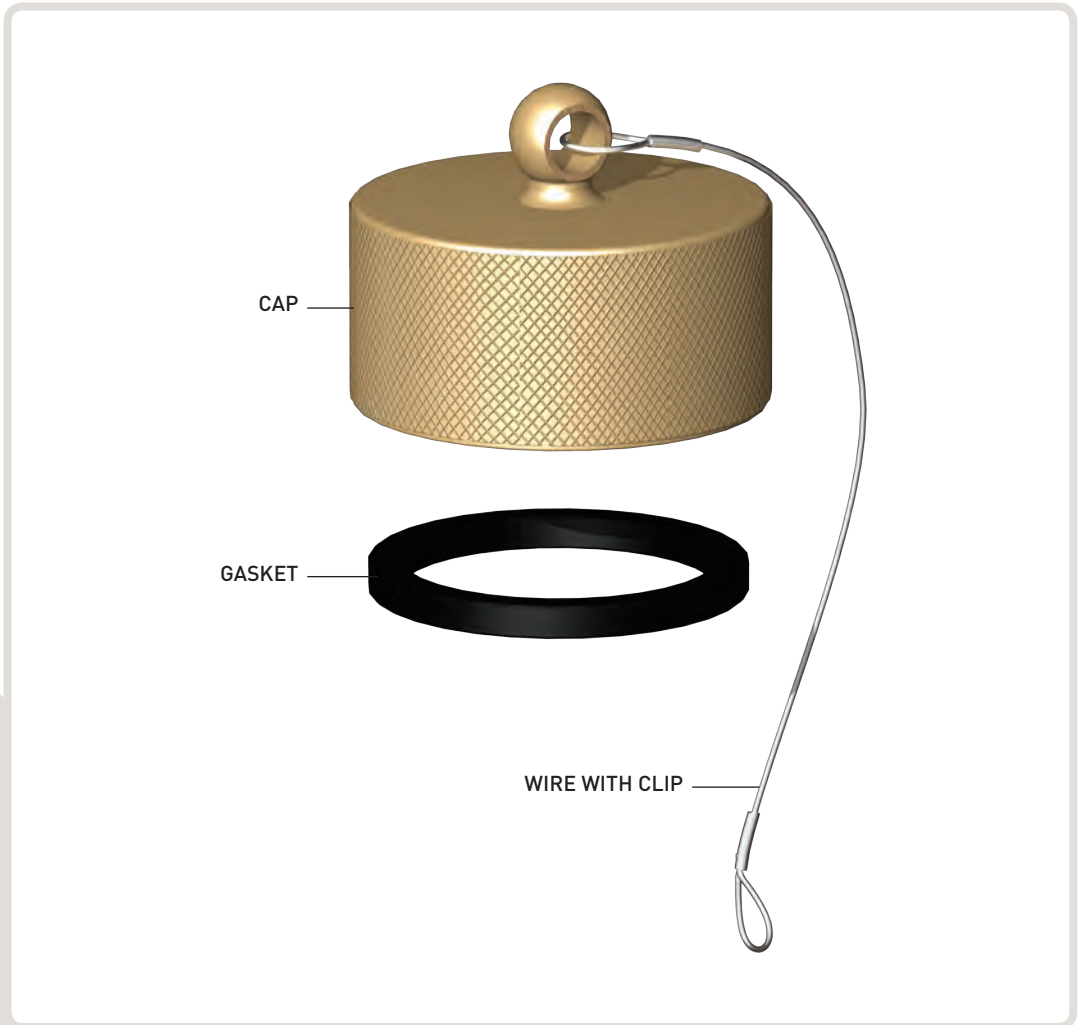
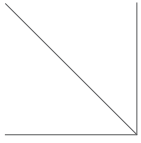
1. Dimension "H" is changeable according to purchase order.
2. Standard coating : Galv'd (carbon steel part).
3. Pipe & Elbow shall be SCH.80 (40A~100A), SCH.40 (125A~250A), 9.5t (300A~above size)
4. Flange size can be changed to JIS 10K, PN10 & 150LBS as customer's requirement.

SOUNDING SYSTEM SOUNDING CAP

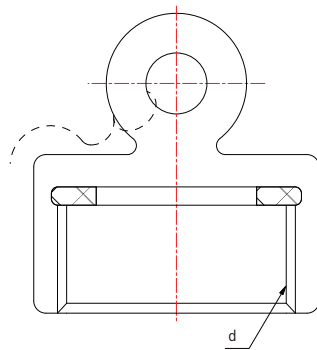
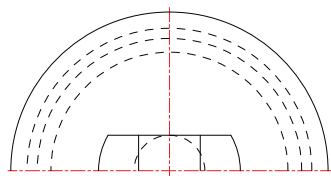
- PART LIST OF SOUNDING CAP
- DIMENSION LIST FOR SOUNDING CAP



PART LIST OF SOUNDING CAP



SOUNDING CAP



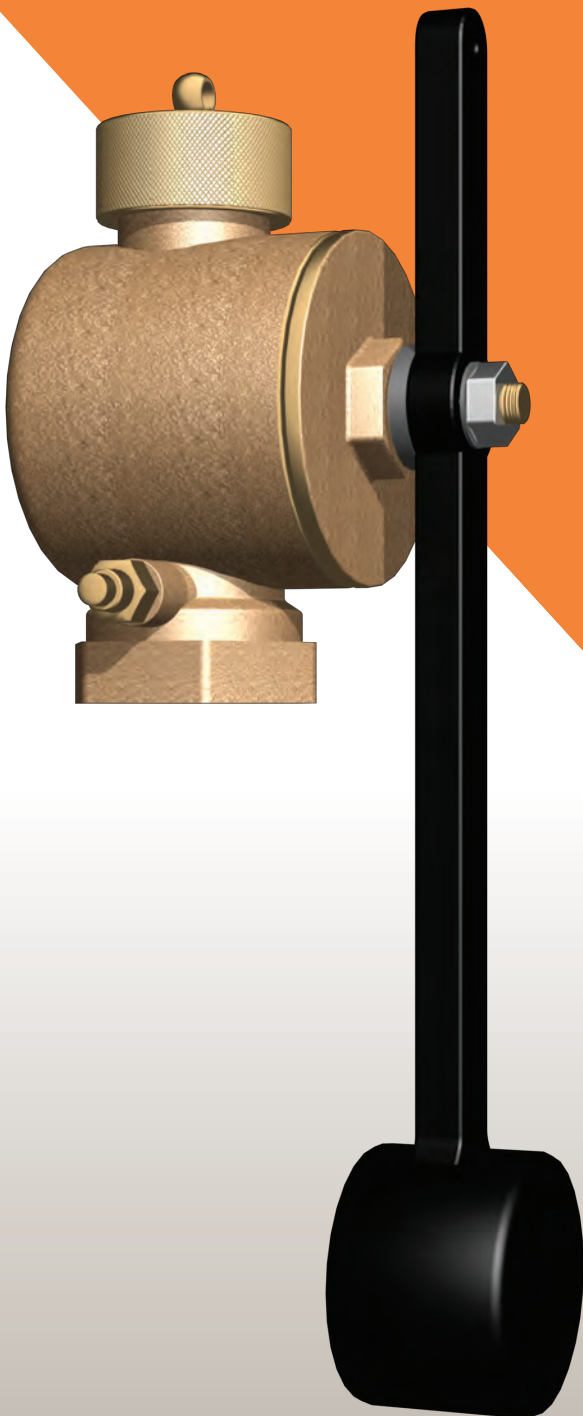
DIMENSION

UNIT(mm)

Nominal dia. (N.D)	d
32A	PF 1 ¼
40A	PF 1 ½
50A	PF 2
65A	PF 2 ½
80A	PF 3

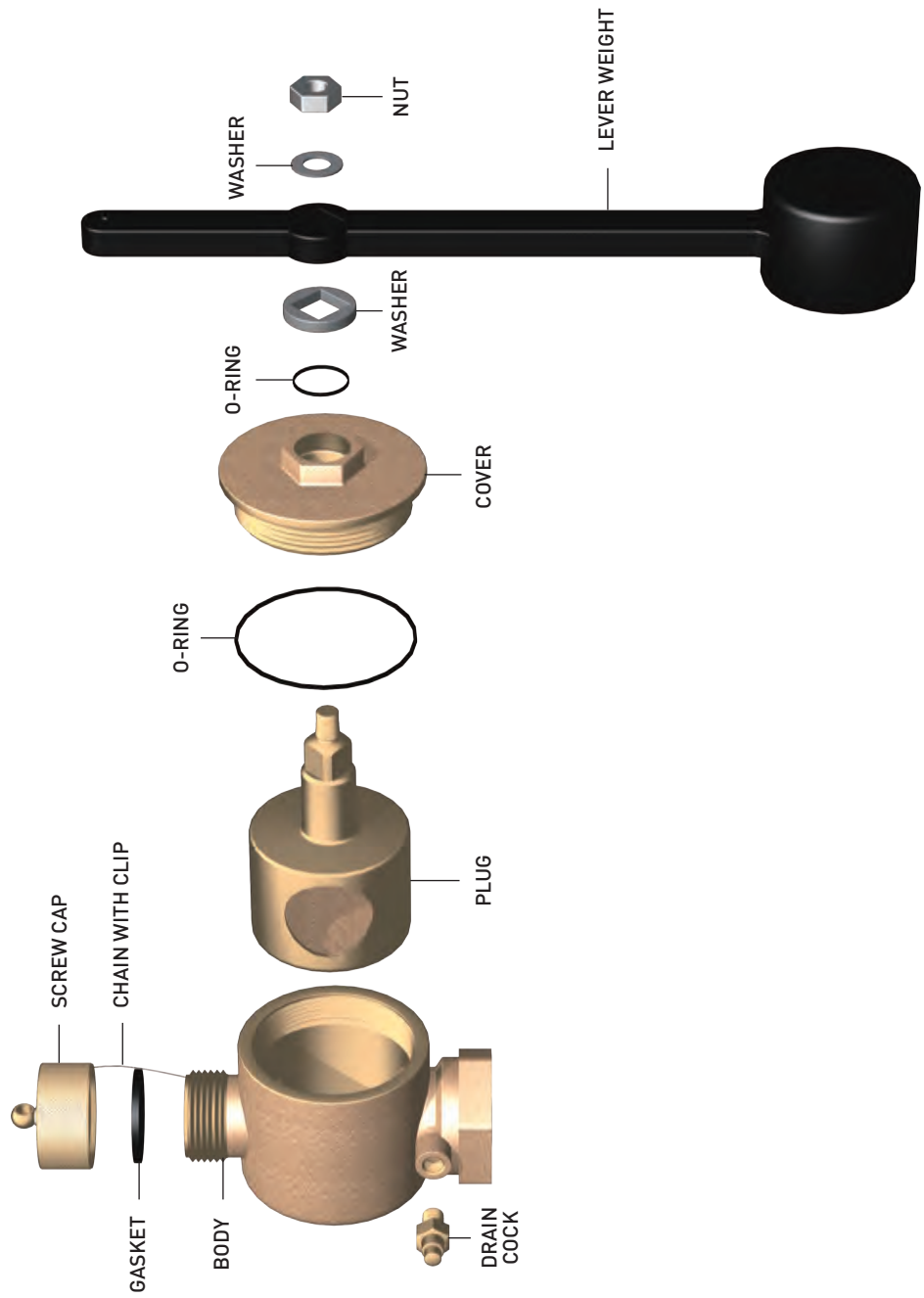
SOUNDING SYSTEM SELF CLOSING SOUNDING COCKS

- PART LIST OF SELF CLOSING SOUNDING COCKS
- DIMENSION LIST FOR SELF CLOSING SOUNDING COCKS



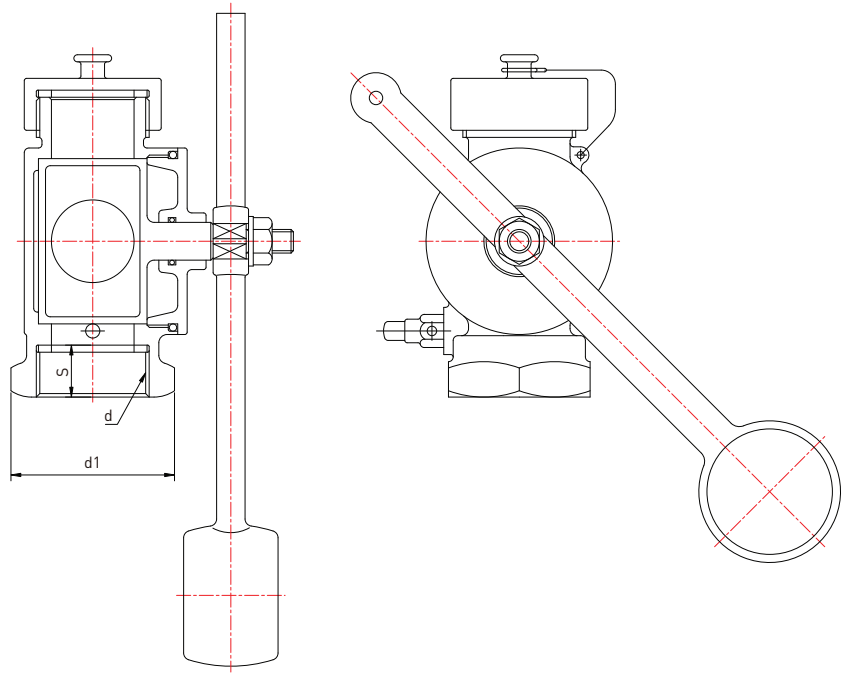
SELF CLOSING SOUNDING COCKS

PART LIST OF SELF CLOSING SOUNDING COCKS



DIMENSION LIST

SELF CLOSING SOUNDING COCKS



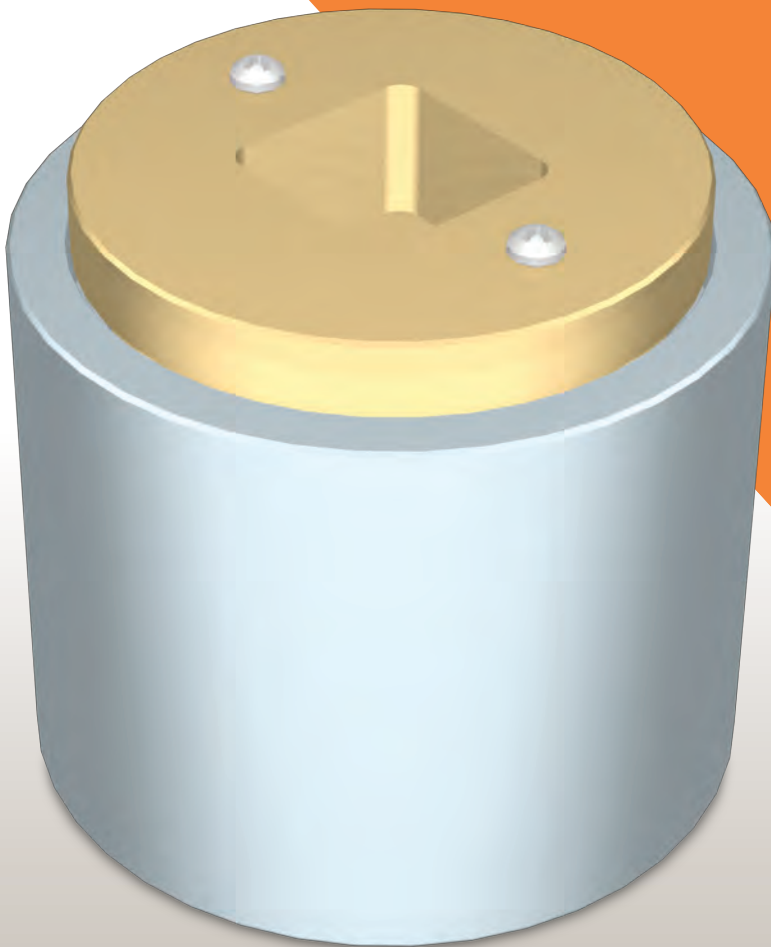
DIMENSION

UNIT(mm)

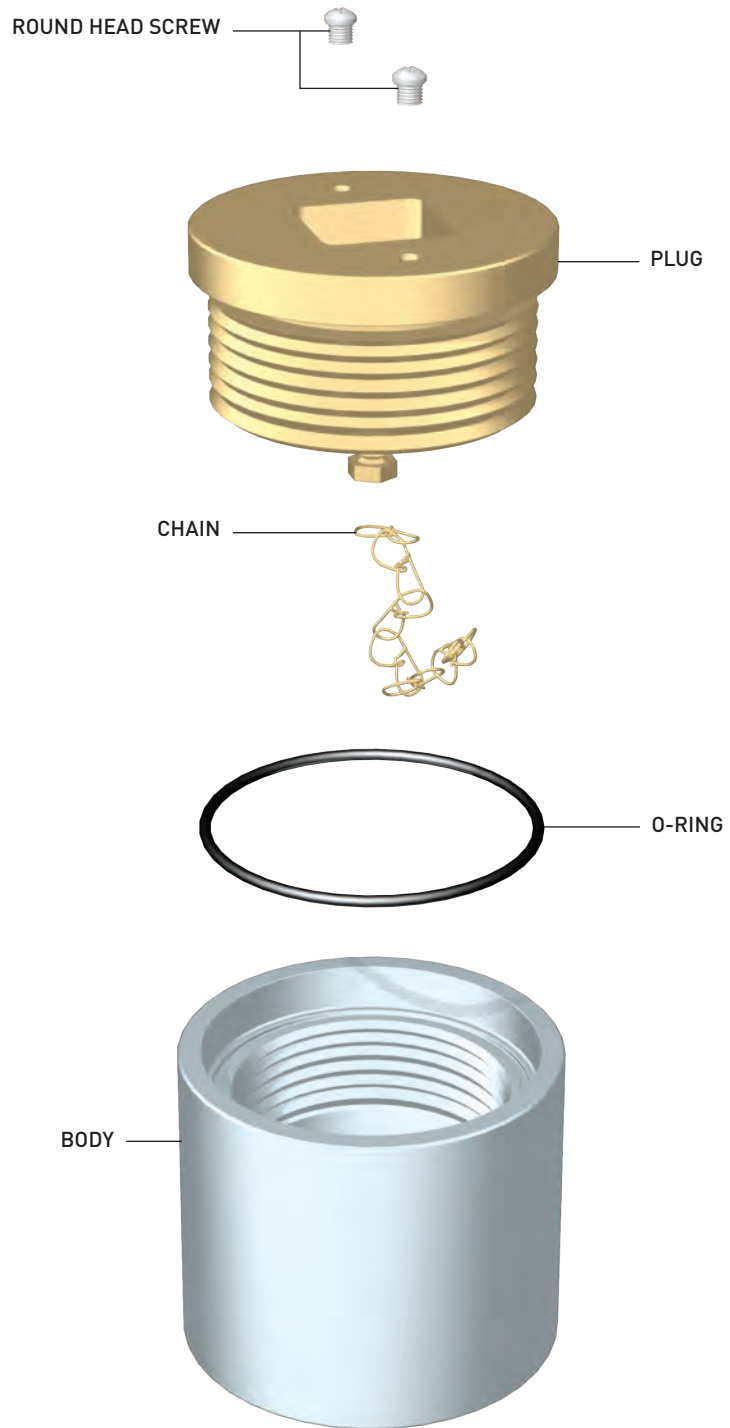
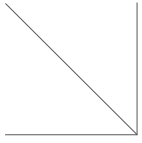
Nominal dia. (N.D)	d	d1	S
40A	PF 1½	60	25
50A	PF 2	70	30
65A	PF 2½	86	30
80A	PF 3	100	35

SOUNDING SYSTEM DECK PIECE SOUNDING CAP

- PART LIST OF DECK PIECE SOUNDING CAP
- DIMENSION & WEIGHT LIST FOR DECK PIECE SOUNDING CAP



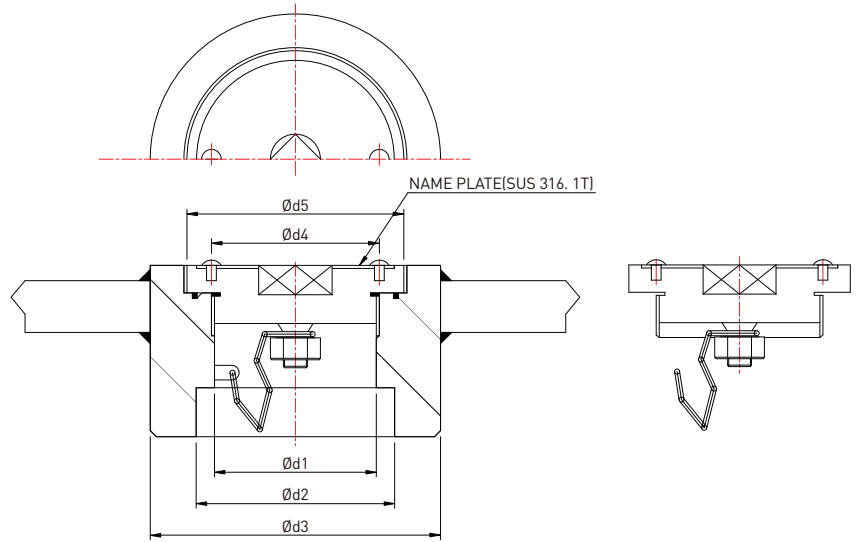
PART LIST OF DECK PIECE SOUNDING CAP



DECK PIECE
SOUNDING CAP

DIMENSION & WEIGHT LIST

DECK PIECE SOUNDING CAP



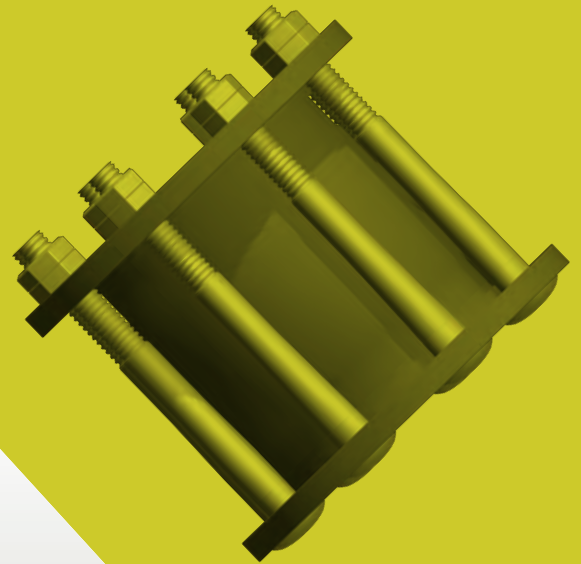
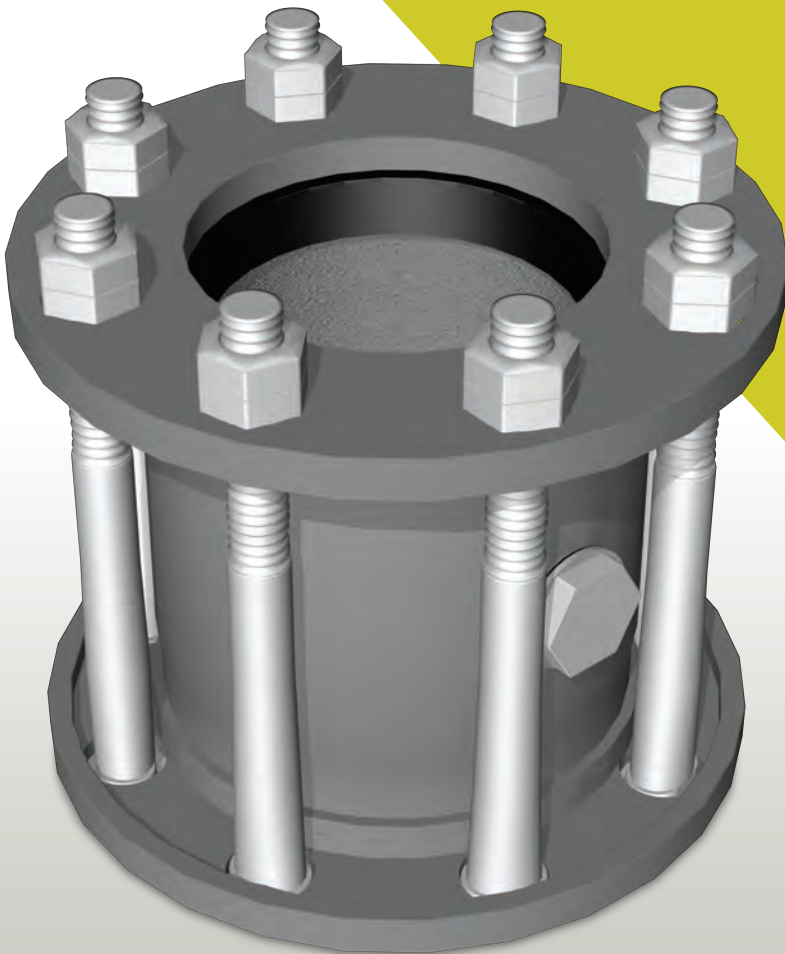
DIMENSION

UNIT(mm)

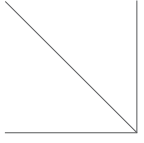
Nominal dia. (N.D)	Ød1	Ød2	Ød3	Ød4	Ød5	DECK OPENING	WEIGHT[kg]
32A	35	44	79	46	64	81	1.7
40A	38.7	50	79	46	64	81	1.7
50A	49.8	62	91	60	75	93	2.1
65A	66	78	108	68	84	110	3.0
80A	79	91	120	78	94	122	3.6

EXPANSION JOINT SLIP TYPE (FOR STEEL PIPES)

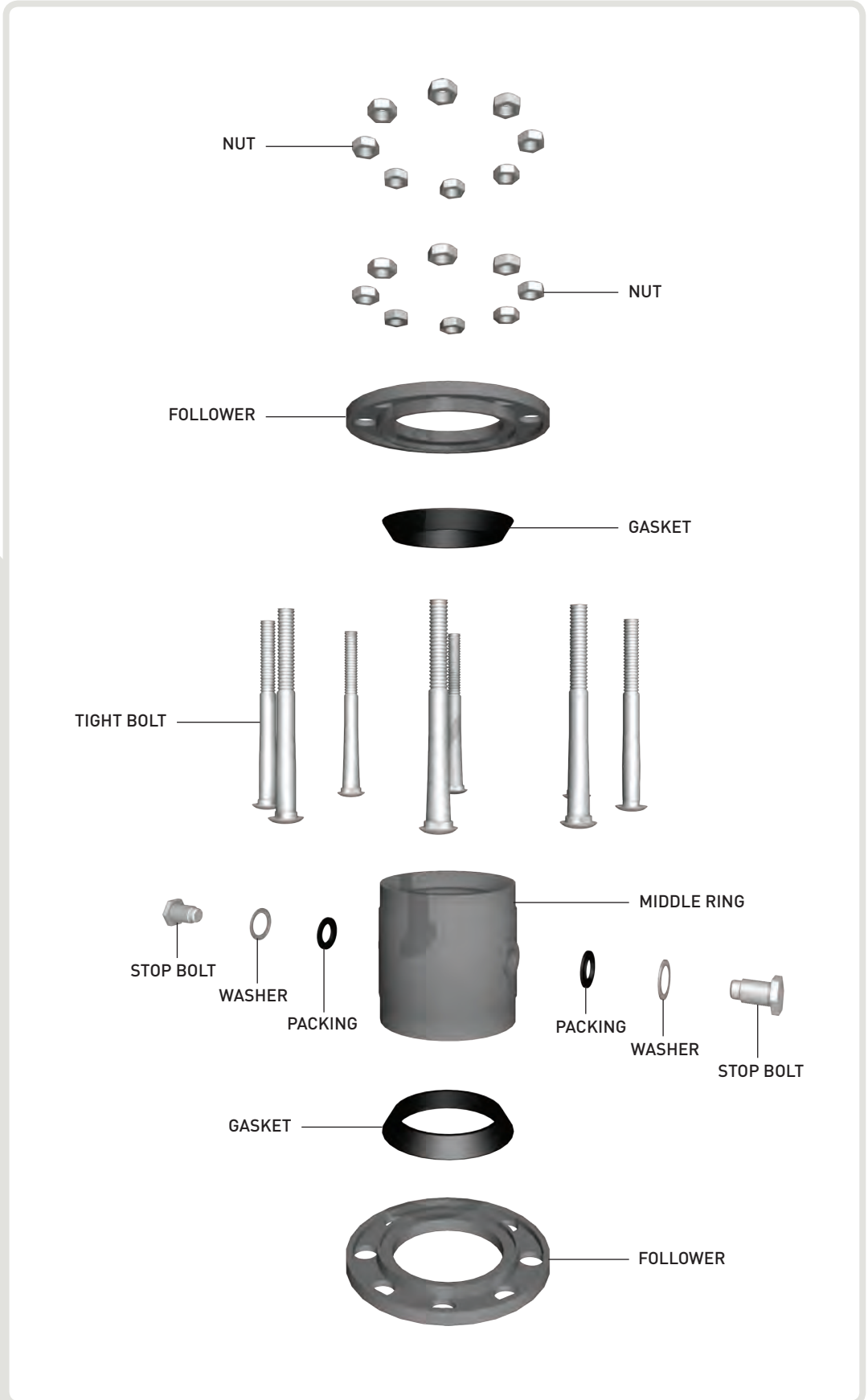
- PART LIST OF SLIP TYPE (FOR STEEL PIPES)
- DIMENSION LIST FOR SLIP TYPE (FOR STEEL PIPES)



PART LIST OF SLIP TYPE (FOR STEEL PIPES)

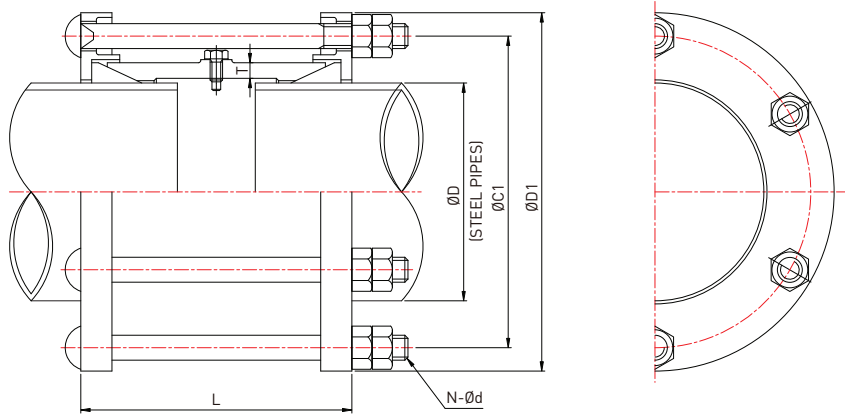


SLIP TYPE
(FOR STEEL PIPES)



DIMENSION LIST

SLIP TYPE (FOR STEEL PIPES)



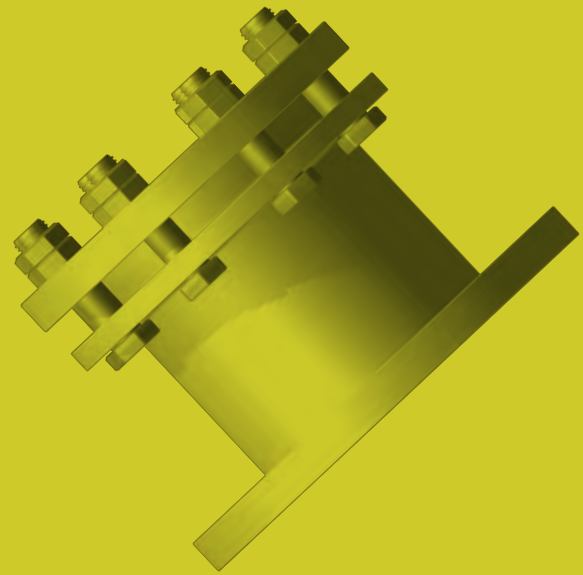
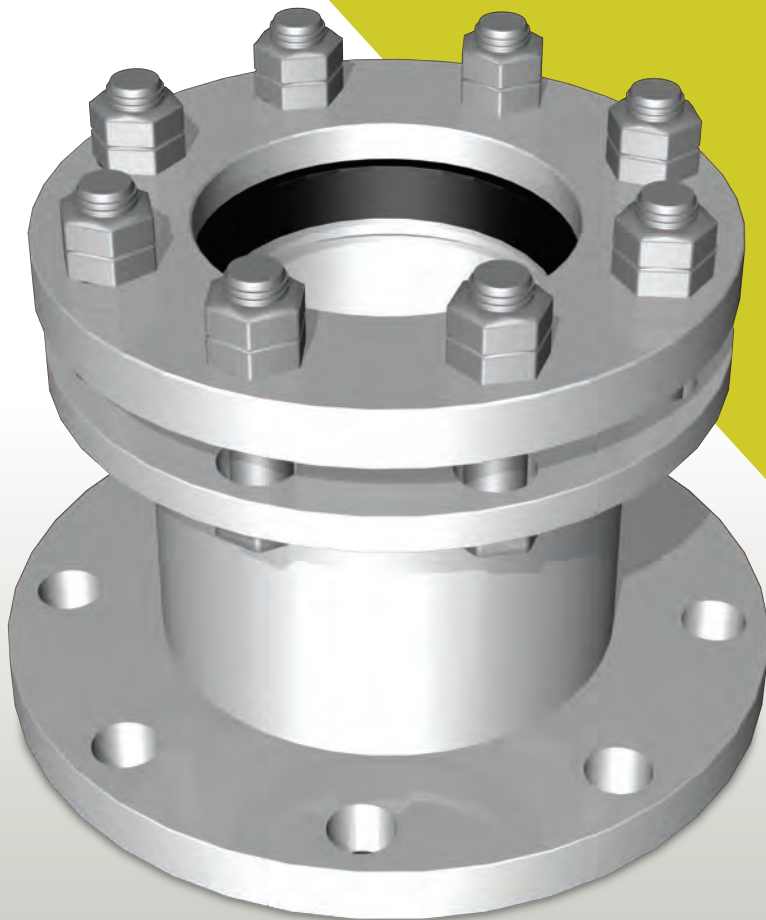
DIMENSION

UNIT(mm)

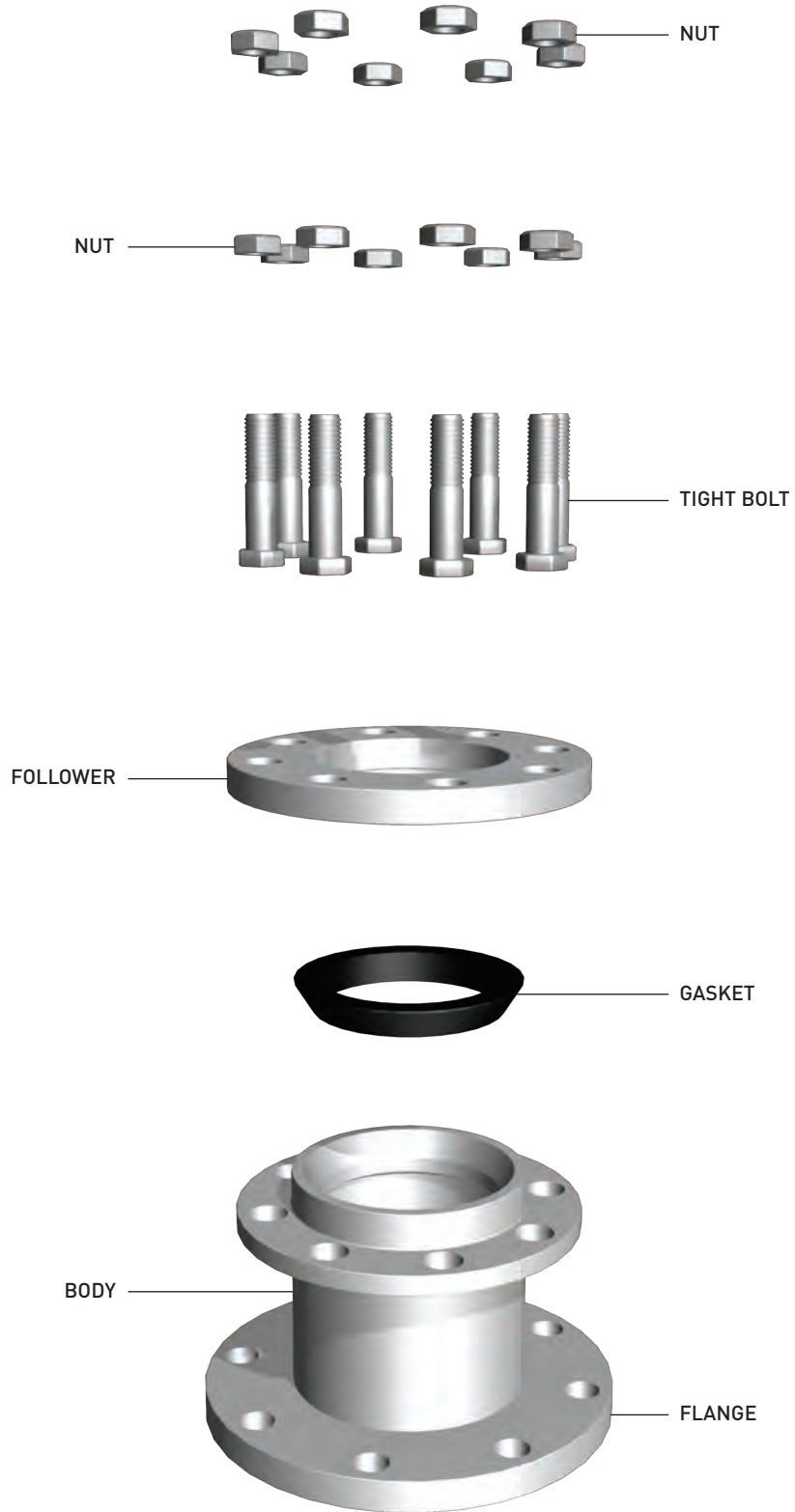
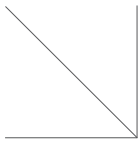
TYPE No.	Nominal dia.		ØD	ØD1	ØC1	N-Ød	L(APPROX.)		T	
	mm	inch					STD	LONG	STD	LONG
EJD-20040	40A	1 ½"	48.6	118	94	3-15	153	273	5.2	5.2
EJD-20050	50A	2"	60.5	132	108	3-15	153	273	6	6
EJD-20065	65A	2 ½"	76.3	149	125	4-15	154	273	7	7
EJD-20080	80A	3"	89.1	176	146	4-19	164	282	7	7
EJD-20100	100A	4"	114.3	204	174	4-19	164	284	9	9
EJD-20125	125A	5"	139.8	230	200	6-19	174	294	10	10
EJD-20150	150A	6"	165.2	282	230	6-19	180	300	11	11
EJD-20200	200A	8"	216.3	320	286	6-19	187	307	13	13
EJD-20250	250A	10"	267.4	373	339	8-19	189	309	13	13
EJD-20300	300A	12"	318.5	426	390	8-19	191	311	13	13
EJD-20350	350A	14"	355.6	466	430	10-19	191	311	13	13
EJD-20400	400A	16"	406.4	520	482	10-19	191	311	13	13
EJD-20450	450A	18"	457.2	578	538	12-19	195	315	13	13
EJD-20500	500A	20"	508.0	634	592	12-19	215	340	14	15
EJD-20550	550A	22"	558.8	686	644	14-19	215	340	14	15
EJD-20600	600A	24"	609.6	736	694	14-19	215	340	14	15
EJD-20650	650A	26"	660.4	790	746	16-19	215	340	14	15
EJD-20700	700A	28"	711.2	842	798	16-19	215	340	14	15
EJD-20750	750A	30"	762.0	894	850	16-19	215	340	14	15
EJD-20800	800A	32"	812.8	948	904	16-19	215	340	14	15

EXPANSION JOINT FLANGE ADAPTER TYPE (FOR STEEL PIPES)

- PART LIST OF FLANGE ADAPTER TYPE (FOR STEEL PIPES)
- DIMENSION & WEIGHT LIST FOR FLANGE ADAPTER TYPE (FOR STEEL PIPES)



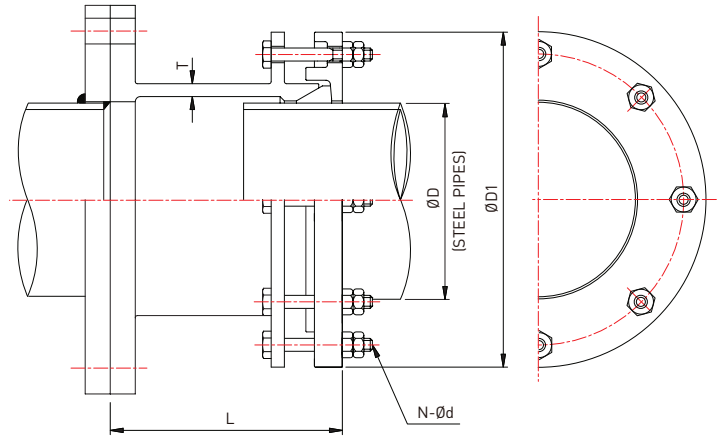
PART LIST OF FLANGE ADAPTER TYPE (FOR STEEL PIPES)



FLANGE ADAPTER TYPE
(FOR STEEL PIPES)

DIMENSION & WEIGHT LIST

FLANGE ADAPTER TYPE (FOR STEEL PIPES)



DIMENSION

UNIT(mm)

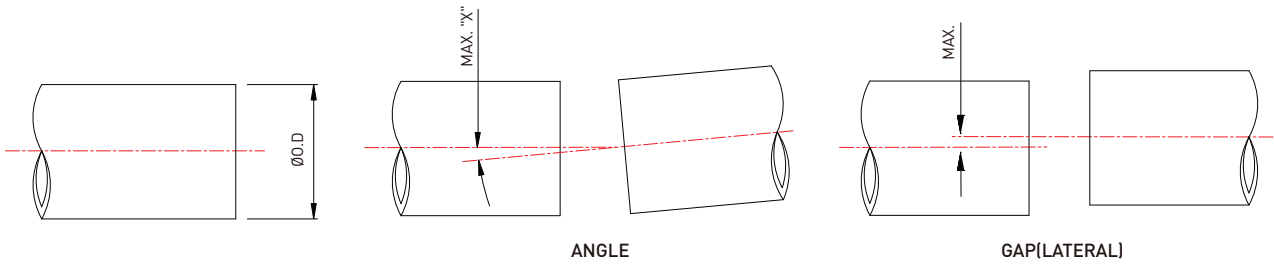
Nominal dia.		ØD	ØD1	T	N-Ød	L (APPROX.)		
mm	inch					5kg/cm ²	10kg/cm ²	16kg/cm ²
40A	1 ½"	48.6	118	6	3-15	172	176	176
50A	2"	60.5	132	6	3-15	174	176	176
65A	2 ½"	76.3	149	7	4-15	175	178	178
80A	3"	89.1	176	7	4-19	179	183	183
100A	4"	114.3	204	9	4-19	182	184	188
125A	5"	139.8	230	10	6-19	187	191	193
150A	6"	165.2	262	11	6-19	192	196	198
200A	8"	216.3	320	13	6-19	197	199	203
250A	10"	267.4	373	13	8-19	200	202	206
300A	12"	318.5	426	13	8-19	201	203	209
350A	14"	355.6	466	13	10-19	203	205	213
400A	16"	406.4	520	13	10-19	203	211	217
450A	18"	457.2	578	14	12-19	205	213	221
500A	20"	508.0	634	14	12-19	207	215	225
550A	22"	558.8	686	14	14-19	209	221	227
600A	24"	609.6	736	14	14-19	209	227	229
650A	26"	660.4	790	14	16-19	209	227	231
700A	28"	711.2	842	14	16-19	209	227	233
750A	30"	762.0	894	14	16-19	211	227	235
800A	32"	812.8	948	14	16-19	211	227	237

NOTE

The above pipes connection shows JIS pipes but others such as ANSI, BS, DIN can be available on request.

EXPANSION JOINT + TECHNICAL DATA

• DIMENSION LIST FOR TECHNICAL DATA



PERMISSIBLE PIPE O.D TOLERANCE FOR "SLIP" & "FLANGE ADAPTER" TYPE EXPANSION JOINT

UNIT(%)

PIPE NOMINAL DIAMETER	PERMISSIBLE PIPE O.D TOLERANCE
40A ~ 300A	-0.8 ~ +0.8
350A ~ 800A	-0.5 ~ +0.5

PERMISSIBLE ANGLE MOVEMENT

UNIT(Degree)

SIZE \ TYPE	STANDARD	LONG
40A ~ 150A	4	4
200A ~ 350A	4	4
400A ~ 800A	3	3

PERMISSIBLE LATERAL MOVEMENT

UNIT(mm)

SIZE \ TYPE	STANDARD	LONG
40A ~ 150A	5	6
200A ~ 350A	6	7
400A ~ 800A	8	10



SUN KOREA CO., LTD

#498-65, DAEJEO 1 DONG, GANGSEO-GU, BUSAN, KOREA

SUN PRECISION CO., LTD

#498-67, DAEJEO 1 DONG, GANGSEO-GU, BUSAN, KOREA

SUN DESIGN CO., LTD

#492-2, DAEWOO EDEN PLAZA, HADAN-2 DONG, SAHA-GU, BUSAN, KOREA